

Tree Inventory Report

University of California, Riverside North District Area

Prepared for | Tricia D. Thrasher, ASLA, LEED AP
Principal Environmental Planner
University of California, Riverside
Capital Asset Strategies
1223 University Avenue, Suite 240
Riverside, California 92507

Prepared by | Psomas
225 South Lake Avenue, Suite 1000
Pasadena, California 91101
T: (626) 351-2000
Contact: David Hughes, Senior Project Manager

March 13, 2017

TABLE OF CONTENTS

<u>Section</u>	<u>Page</u>
1.0 Introduction	1
1.1 Project Understanding	1
1.2 Existing Conditions	1
2.0 Methodology	1
2.1 Mapping	2
2.2 Diameter	2
2.3 Height and Canopy	2
2.4 Aesthetics	2
2.5 Health	2
3.0 Results	3
4.0 Recommended Tree Avoidance and Minimization Measures During Construction	5
5.0 References	6

TABLES

<u>Table</u>	<u>Page</u>
1 Summary of Tree Survey Results	3

EXHIBITS

<u>Exhibit</u>	<u>Follows Page</u>
1 Project Location	1
2 Study Area	1
3 Tree Locations	4

ATTACHMENTS

<u>Attachment</u>
A Tree Survey Data

1.0 INTRODUCTION

The purpose of this report is to present the findings of a tree inventory for the North District Area within the University of California, Riverside (UCR) campus, which includes the existing Canyon Crest Family Student Housing complex (study area).

1.1 PROJECT UNDERSTANDING

The study area for this report consists of the approximately 51-acre Canyon Crest Family Student Housing complex and is located north of West Linden Street, east of Canyon Crest Drive, south of Blaine Street, and west of the University of California's Child Development Center and Parking Lots 23 and 28. The regional location and local vicinity of the study area is presented in Exhibit 1. The study area occurs on the U.S. Geological Survey's (USGS') Riverside East 7.5-minute quadrangle (refer to Exhibit 2). The survey area elevation ranges from approximately 1,037 to 1,102 feet above mean sea level.

Psomas undertook this study to evaluate existing trees in the study area. This study will be used to inform future land use planning decisions for the North District Area and to support future environmental documentation pursuant to the California Environmental Quality Act (CEQA). Future building opportunities identified in the UCR Physical Master Plan Study (May 2016) include potential student housing, recreation, and retail uses in the North District Area. UCR is initiating pre-development studies to inform future planning activities; however, there are currently no site-specific development plans.

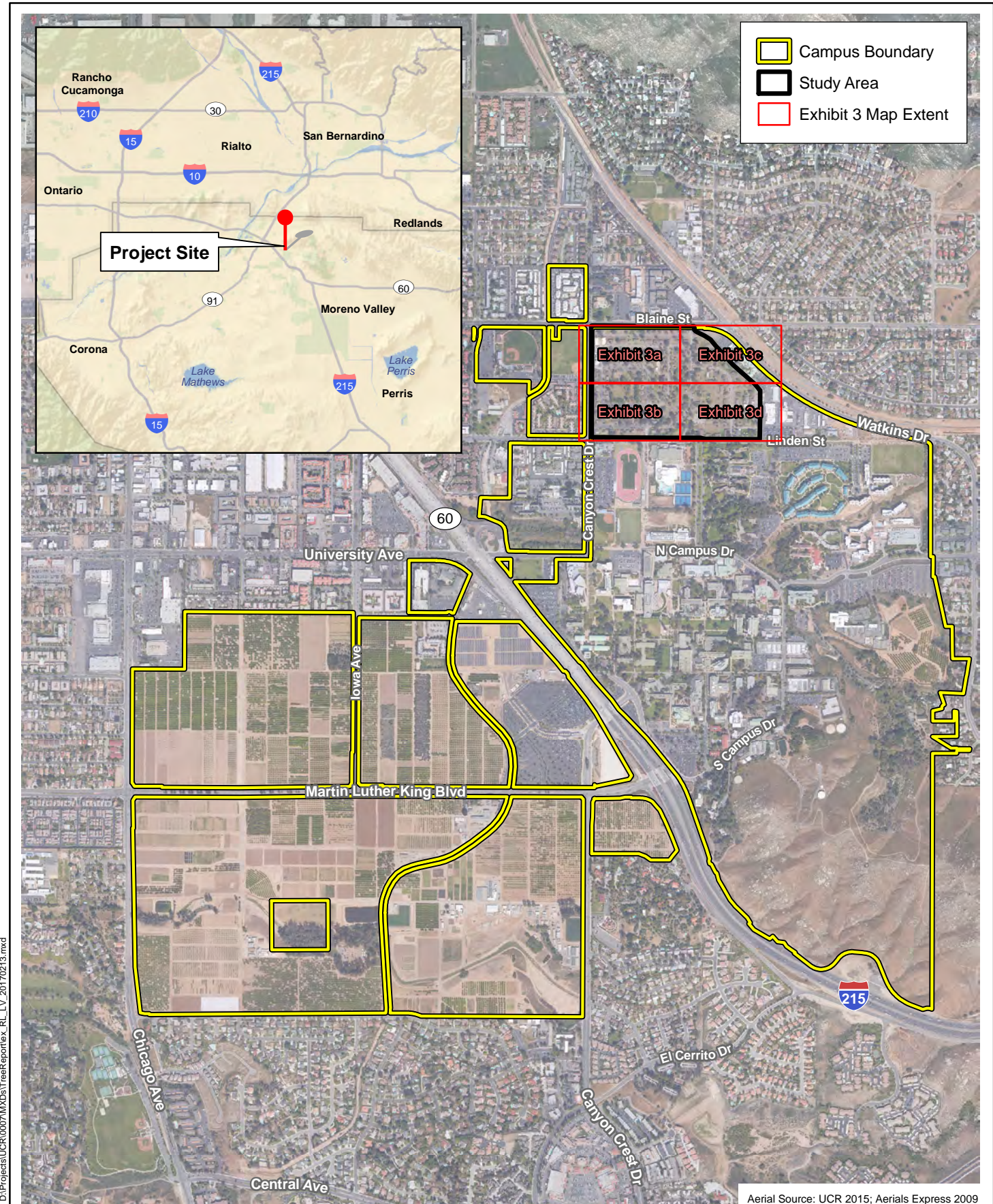
1.2 EXISTING CONDITIONS

The survey area contains the Canyon Crest Family Student Housing complex, a campus radio broadcasting station, and various maintenance/support facilities for the campus. The survey area has no existing native vegetation types, and consists mainly of ruderal, ornamental, disturbed, and developed areas.

2.0 METHODOLOGY

Field surveys in support of this tree report were performed on January 10, 11, 12, and 17, 2017, by Psomas Certified Arborist Trevor Bristle (International Society of Arboriculture [ISA] Certificate No. WE-10233A) and Biologist Cristhian Mace. There are no specific regulations that govern tree removal on campus; UCR removes trees on campus at its own discretion. Campus Programs and Practices (PP) 4.1-2(b) included in the UCR 2005 Long-Range Development Plan (LRDP) Environmental Impact Report (EIR) (State Clearinghouse [SCH] No. 2005041164) requires that the campus continue to relocate, where feasible, mature "specimen" trees that would be removed as a result of construction activities on the campus. Mature trees are considered trees with a trunk diameter at breast height (dbh) of 12-inches or greater. However, to provide a comprehensive evaluation of trees located in the study area, this study includes trees with a trunk dbh of 4-inches or greater.

During the survey, each tree was assigned an individual number and the following data were collected: dbh, tree height, and canopy width. Qualitative ratings for each tree's overall health and aesthetic quality were also given. The collected data are included in Attachment A and described in more detail below.



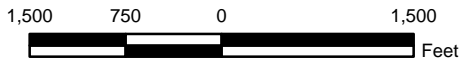
D:\Projects\UCR\0007\MXD\TreesReport\ex_RL_LV_20170213.mxd

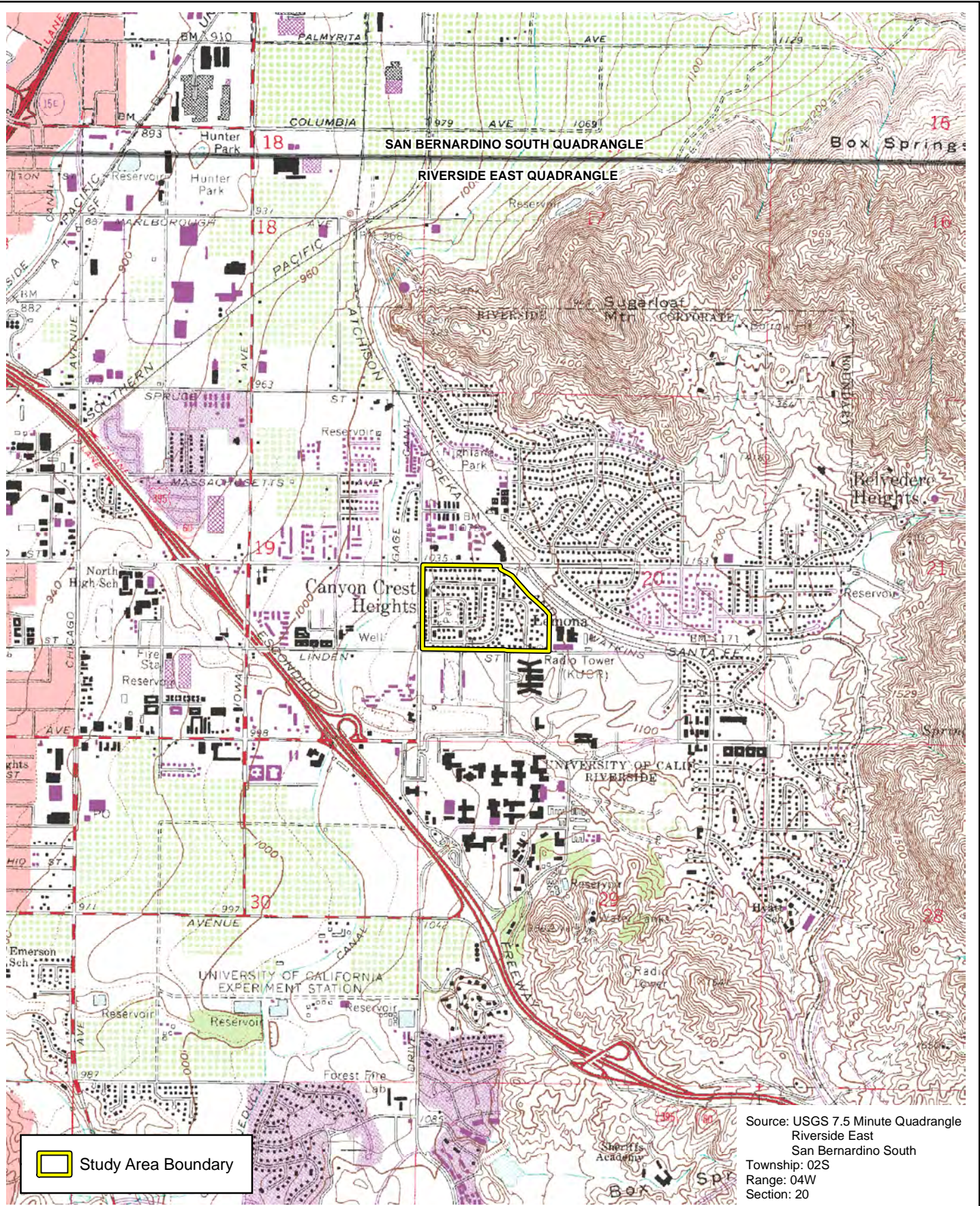
Aerial Source: UCR 2015; Aerials Express 2009

Regional and Local Vicinity


Exhibit 1

Tree Inventory Report
 North District Pre-Development Studies, University of California, Riverside





D:\Projects\UCR\0007\MXD\TreeReport\ex_USGS_20170213.mxd

 Study Area Boundary

Source: USGS 7.5 Minute Quadrangle
 Riverside East
 San Bernardino South
 Township: 02S
 Range: 04W
 Section: 20

Study Area

Tree Inventory Report
 North District Pre-Development Studies, University of California, Riverside

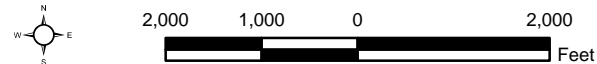


Exhibit 2



2.1 MAPPING

Each tree that was surveyed was mapped using a hand-held Global Positioning System (GPS) device. Where the GPS device was unable to receive a clear signal (due to the dense tree canopy) locations were recorded in a nearby clearing and the distance and direction from the GPS location to the tree location were recorded. Locations were confirmed in the field by using geo-referenced field maps.

2.2 DIAMETER

Using a diameter tape, trunk diameters were measured at a height of 4.5 feet above mean natural grade; multiple trunks were measured separately. The diameter of the largest two trunks was combined to determine the total diameter of each tree. In addition, the total number of trunks was recorded. The diameter was estimated for trees that were not accessible (e.g., located on a steep slope or infested with bees).

2.3 HEIGHT AND CANOPY

The height of each tree was estimated from mean natural grade to the highest branch. Also, the diameter of each tree's canopy was estimated at its widest point.

2.4 AESTHETICS

Each tree assessed was inspected and compared to an archetype tree (considered excellent on all points mentioned below) of the same species. Tree aesthetics were evaluated with respect to overall form and symmetry, crown balance, branching pattern, and broken branches.

The trees were rated on a scale of 1 to 5, as follows:

- 1: Very Poor
- 2: Poor
- 3: Fair
- 4: Good
- 5: Excellent

2.5 HEALTH

The health of each tree was assessed based on a visual examination from the ground. Tree health was evaluated based on evidence of vigor, such as the amount of foliage; leaf color and size; presence of branch or twig dieback; severity of insect infestation; the presence of disease; heart rot; fire damage; mechanical damage; amount of new growth; appearance of bark; and rate of callous development over wounds. The tree's structural integrity was also evaluated with respect to branch attachment, branch placement, root health, and stability. In addition, the health assessment considered such elements as the presence of decay, weak branch attachments, and the presence of exposed roots due to soil erosion.

The trees were rated on the 1 to 5 scale, noted above.

3.0 RESULTS

A total of 681 trees with a trunk dbh of 4-inches or greater were identified in the survey area, consisting of 55 different species as summarized in Table 1. Of these trees, 486 meet the criteria to be considered mature trees (trunk dbh of 12-inches or greater). The locations of the trees included in this tree survey are provided in Exhibit 3. A detailed summary of all collected tree data is provided in Attachment A.

**TABLE 1
SUMMARY OF TREE SURVEY RESULTS**

Species		Total	Native	Non-Native	Mature Trees
Common Name	Scientific Name				
African fern pine	<i>Afrocarpus gracilior</i>	3		X	1
tree of heaven ^a	<i>Ailanthus altissima</i>	5		X	2
silktree	<i>Albizia julibrissin</i>	2		X	
strawberry tree	<i>Arbutus unedo</i>	38		X	6
paper mulberry	<i>Broussonetia papyrifera</i>	3		X	1
weeping bottlebrush	<i>Callistemon viminalis</i>	16		X	
Chinese hackberry	<i>Celtis sinensis</i>	2		X	1
lemon	<i>Citrus x Limon</i>	4		X	1
orange	<i>Citrus x sinensis</i>	3		X	
laurel-leaf snailseed	<i>Cocculus laurifolius</i>	38		X	12
lemon-scented gum	<i>Corymbia citriodora</i>	2		X	2
red flowering gum	<i>Corymbia ficifolia</i>	3		X	3
Italian cypress	<i>Cupressus sempervirens</i>	3		X	2
loquat	<i>Eriobotrya japonica</i>	4		X	3
crybaby tree	<i>Erythrina crista-galli</i>	1		X	1
silver dollar gum	<i>Eucalyptus polyanthemus</i>	30		X	29
red ironbark	<i>Eucalyptus sideroxylon</i>	10		X	10
Moreton Bay fig	<i>Ficus macrophylla</i>	2		X	2
Indian laurel fig	<i>Ficus microcarpa</i>	7		X	3
Oregon ash	<i>Fraxinus latifolia</i>	97	X		59
shamel ash	<i>Fraxinus uhdei</i>	3		X	1
maidenhair tree	<i>Ginkgo biloba</i>	1		X	
honeylocust	<i>Gleditsia triacanthos</i>	2		X	2
toyon	<i>Heteromeles arbutifolia</i>	5	X		2
black poui	<i>Jacaranda mimosifolia</i>	1		X	1
Chinese juniper	<i>Juniperus chinensis</i>	1		X	1
goldenrain tree	<i>Koelreuteria bipinnata</i>	11		X	2
glossy privet	<i>Ligustrum lucidum</i>	1		X	
sweetgum	<i>Liquidambar styraciflua</i>	1		X	1
Chinaberry	<i>Melia azedarach</i>	1		X	1
white mulberry	<i>Morus alba</i>	15		X	13
avocado	<i>Persea americana</i>	11		X	11
date palm ^b	<i>Phoenix dactylifera</i>	1		X	1
Canary Island pine	<i>Pinus canariensis</i>	5		X	5
Aleppo pine	<i>Pinus halepensis</i>	13		X	9
Japanese cheesewood	<i>Pittosporum tobira</i>	1		X	

**TABLE 1
SUMMARY OF TREE SURVEY RESULTS**

Species		Total	Native	Non-Native	Mature Trees
Common Name	Scientific Name				
western sycamore	<i>Platanus racemosa</i>	28	X		23
fremont cottonwood	<i>Populus fremontii</i>	5	X		5
apricot	<i>Prunus armeniaca</i>	1		X	
Catalina cherry	<i>Prunus ilicifolia</i> ssp. <i>lyonii</i>	2	X		1
Mexican plum	<i>Prunus mexicana</i>	1		X	1
pomegranate	<i>Punica protopunica</i>	4		X	4
coast live oak	<i>Quercus agrifolia</i>	4	X		3
holm oak	<i>Quercus ilex</i>	59		X	52
cork oak	<i>Quercus suber</i>	31		X	30
black locust	<i>Robinia pseudoacacia</i>	4		X	2
black willow	<i>Salix gooddingii</i>	1	X		
octopus tree	<i>Schefflera actinophylla</i>	1		X	1
Peruvian peppertree	<i>Schinus molle</i>	112		X	109
Brazilian peppertree	<i>Schinus terebinthifolius</i>	13		X	9
tipu	<i>Tipuana tipu</i>	7		X	6
Chinese elm	<i>Ulmus parvifolia</i>	12		X	12
Siberian elm	<i>Ulmus pumila</i>	4		X	1
Mexican fan palm ^b	<i>Washingtonia robusta</i>	38		X	37
shiny xylosma	<i>Xylosma congestum</i>	8		X	2
Total		681	142	539	486
^a Tree of Heaven is listed as a Cal-IPC moderately invasive plant. ^b The age of palms is not well-correlated to trunk diameter. Therefore it is unclear palms are to be considered as mature trees.					

In general, the various trees in the survey area are in good health, which would be expected of landscaped trees that have been regularly maintained. No readily observed diseases or insect infestations were identified during the course of the survey. As the survey took place during winter, many of the deciduous trees have become dormant and lost their foliage for the year. Since foliage was not available to assist with determining health on these trees, the bark, twigs, branches, and overall stature of the tree were used to assess this aspect.

Of the various trees planted within the survey area, 142 are native to California and include 7 species: Oregon ash, toyon, western sycamore, Fremont cottonwood, Catalina cherry, coast live oak, and black willow. The remaining 539 trees are non-native, consisting of the 48 species that are listed above in Table 1.

Generally, transplantation of the trees in the survey area is not recommended as tree location is costly with a likelihood of eventual mortality. However transplantation will be evaluated on a case-by-case basis to comply with the objective of PP 4.1-2(b) to preserve larger trees. Trees are either too large to be transplanted or are easily replaced from nursery container stock. Tree relocation is not recommended due to the potential of eventual mortality and the high cost. Any trees deemed to be of intrinsic value to the campus can be taken into account prior to construction activities and protected or avoided accordingly.



- Project Boundary**
- Trees By Common Name**
- African fern pine
 - Aleppo pine
 - Avocado
 - Brazilian peppertree
 - Catalina cherry
 - Chinese elm
 - Chinese hackberry
 - Cork oak
 - Fremont cottonwood
 - Goldenrain tree
 - Holm oak
 - Honeylocust
 - Indian laurel fig
 - Laurel-leaf snailseed
 - Lemon
 - Loquat
 - Mexican fan palm
 - Moreton bay fig
 - Oregon ash
 - Peruvian peppertree
 - Pomegranate
 - Red ironbark
 - Shamel ash
 - Shiny xylosma
 - Siberian elm
 - Silktree
 - Silver dollar gum
 - Strawberry tree
 - Sweetgum
 - Tipu
 - Tree of heaven
 - Weeping bottlebrush
 - Western sycamore
 - White mulberry
 - tipu

D:\Projects\UCR\0007\MXDs\TreeReport\lex_TreeLocations_20170213.mxd

Aerial Source: ESRI, NAIP 2014

Tree Locations

Tree Inventory Report
 North District Pre-Development Study Area, University of California, Riverside

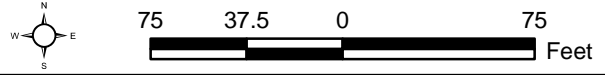


Exhibit 3a



D:\Projects\UCR\0007\MXDs\TreeReport\lex_TreeLocations_20170213.mxd



- Project Boundary**
- Trees By Common Name**
- Aleppo pine
 - Black poui
 - Lemon-scented gum
 - Brazilian peppertree
 - Canary Island pine
 - China berry
 - Chinese elm
 - Cork oak
 - Fremont cottonwood
 - Goldenrain tree
 - Holm oak
 - Indian laurel fig
 - Italian cypress
 - Laurel-leaf snailseed
 - Loquat
 - Maidenhair tree
 - Mexican fan palm
 - Mexican plum
 - Orange
 - Oregon ash
 - Paper mulberry
 - Peruvian peppertree
 - Red ironbark
 - Shiny xylosma
 - Silver dollar gum
 - Strawberry tree
 - Tipu
 - Toyon
 - Weeping bottlebrush
 - Western sycamore
 - White mulberry

Tree Locations

Tree Inventory Report
North District Pre-Development Study Area, University of California, Riverside

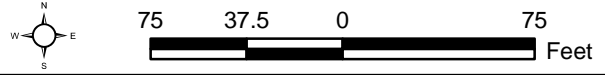


Exhibit 3b



(Rev: 02/13/2017 MMD) R:\Projects\UCR\3\UCR000700\Graphics\TreeReport\lex_TreeLocations_20170213.pdf



Tree Locations

Tree Inventory Report
 North District Pre-Development Study Area, University of California, Riverside

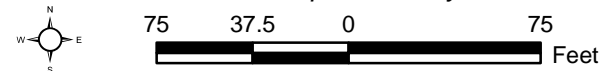


Exhibit 3c





- Project Boundary**
- Trees By Common Name**
- Aleppo pine
 - Apricot
 - Black locust
 - Black willow
 - Brazilian peppertree
 - Catalina cherry
 - Chinese hackberry
 - Chinese juniper
 - Cork oak
 - Crybabytree
 - Fremont cottonwood
 - Glossy privet
 - Goldenrain tree
 - Holm oak
 - Indian laurel fig
 - Lemon
 - Mexican fan palm
 - Mexican plum
 - Moreton bay fig
 - Octopus tree
 - Orange
 - Oregon ash
 - Peruvian peppertree
 - Pomegranate
 - Red flowering gum
 - Shamel ash
 - Siberian elm
 - Silktree
 - Silver dollar gum
 - Tipu
 - Tree of heaven
 - Weeping bottlebrush
 - Western sycamore
 - White mulberry

D:\Projects\UCR\0007\MXDs\TreeReport\lex_TreeLocations_20170213.mxd

Aerial Source: ESRI, NAIP 2014

Tree Locations

Tree Inventory Report
 North District Pre-Development Study Area, University of California, Riverside

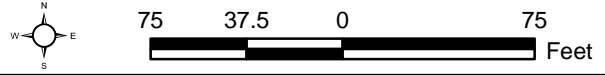


Exhibit 3d



(Rev: 02/13/2017 MMD) R:\Projects\UCR\3\UCR000700\Graphics\TreeReport\lex_TreeLocations_20170213.pdf

4.0 RECOMMENDED TREE AVOIDANCE AND MINIMIZATION MEASURES DURING CONSTRUCTION

Future construction activities may have unintended and/or indirect negative effects on trees. In order to avoid any unintended harm to trees adjacent to potential construction areas, the following measures are recommended:

1. Brightly colored construction fencing should be placed along or outside the dripline (i.e., outer canopy edge) of any trees to be preserved during construction activities.
2. No stockpiling of materials, vehicle operation, or other soil-disturbing activities shall occur within the driplines of trees that are to be preserved during construction.
3. Changes to the grade or drainage patterns in the areas surrounding the dripline of a protected tree not designated for removal is recommended so that excess water does not drain to these trees.
4. A Certified Arborist should be retained to ensure compliance with any tree protection measures set forth and to work with construction personnel to minimize impacts to trees that are to be preserved during construction.

5.0 REFERENCES

California Invasive Plant Council (Cal-IPC). 2017 (February, access date). *Ailanthus altissima* (*Tree of heaven*). http://www.cal-ipc.org/ip/management/plant_profiles/Ailanthus_altissima.php.

University of California, Riverside (UCR). 2016 (May 17). *Physical Master Plan Study*. Riverside, CA. http://cpp.ucr.edu/masterplan_study/ucriverside_pmps_full_report_05242016a.pdf.

———. 2005 (November). *University of California, Riverside 2005 Long Range Development Plan Final Environmental Impact Report* (prepared by EIP Associates). Riverside, CA: UCR. <http://lrdp.ucr.edu/UCR%20LRDP%20Volume%201%20Draft%20EIR.pdf>.

ATTACHMENT A
TREE SURVEY DATA

**TABLE A
TREE SURVEY DATA**

Tree Tag No.	Common Name	Tree Species	No. Main Trunks	dbh (in)		Total Trunk dbh	Height (ft)	Canopy Diameter (ft)	Health Rating	Aesthetic Rating	Mature Tree
				1st Trunk	2nd Trunk						
1	weeping bottlebrush	<i>Callistemon viminalis</i>	2	6.0	1.5	7.5	20	18	3	3	
2	weeping bottlebrush	<i>Callistemon viminalis</i>	4	4.5	3.0	7.5	20	20	3	3	
3	shiny xylosma	<i>Xylosma congestum</i>	1	7.0		7.0	25	22	3	3	
4	shiny xylosma	<i>Xylosma congestum</i>	2	5.0	2.0	7.0	15	20	3	3	
5	shiny xylosma	<i>Xylosma congestum</i>	2	8.0	4.0	12.0	25	25	3	3	X
6	shiny xylosma	<i>Xylosma congestum</i>	1	9.0		9.0	20	22	3	3	
7	shiny xylosma	<i>Xylosma congestum</i>	1	8.0		8.0	25	20	3	3	
8	strawberry tree	<i>Arbutus unedo</i>	2	7.0	3.5	10.5	15	20	3	3	
9	strawberry tree	<i>Arbutus unedo</i>	1	4.0		4.0	8	12	3	3	
10	strawberry tree	<i>Arbutus unedo</i>	3	5.0	3.5	8.5	12	12	3	3	
11	strawberry tree	<i>Arbutus unedo</i>	1	4.5		4.5	8	10	3	3	
12	Oregon ash	<i>Fraxinus latifolia</i>	1	9.4		9.4	20	20	3	3	
13	Oregon ash	<i>Fraxinus latifolia</i>	1	7.5		7.5	25	20	3	3	
14	Oregon ash	<i>Fraxinus latifolia</i>	1	10.8		10.8	25	20	3	3	
15	strawberry tree	<i>Arbutus unedo</i>	4	8.2	4.8	13.0	12	20	3	3	X
16	strawberry tree	<i>Arbutus unedo</i>	1	9.0		9.0	8	20	2	1	
17	strawberry tree	<i>Arbutus unedo</i>	3	5.0	4.0	9.0	15	20	3	3	
18	strawberry tree	<i>Arbutus unedo</i>	4	8.4	6.0	14.4	20	30	2	3	X
19	strawberry tree	<i>Arbutus unedo</i>	6	3.5	3.5	7.0	10	18	2	2	
20	Oregon ash	<i>Fraxinus latifolia</i>	1	6.7		6.7	20	12	3	3	
21	Oregon ash	<i>Fraxinus latifolia</i>	1	9.6		9.6	30	25	3	3	
22	toyon	<i>Heteromeles arbutifolia</i>	2	3.8	2.0	5.8	16	30	2	2	
23	weeping bottlebrush	<i>Callistemon viminalis</i>	3	4.1	2.0	6.1	15	12	3	3	
24	Oregon ash	<i>Fraxinus latifolia</i>	1	11.7		11.7	30	30	3	3	
25	strawberry tree	<i>Arbutus unedo</i>	6	4.8	4.0	8.8	12	15	3	3	
26	strawberry tree	<i>Arbutus unedo</i>	3	3.0	3.0	6.0	12	18	4	3	
27	Oregon ash	<i>Fraxinus latifolia</i>	1	9.0		9.0	30	22	3	3	
28	strawberry tree	<i>Arbutus unedo</i>	2	7.2	5.4	12.6	20	25	4	3	X
29	Oregon ash	<i>Fraxinus latifolia</i>	1	10.0		10.0	35	25	3	3	
30	strawberry tree	<i>Arbutus unedo</i>	3	4.0	4.0	8.0	20	25	3	3	

**TABLE A
TREE SURVEY DATA**

Tree Tag No.	Common Name	Tree Species	No. Main Trunks	dbh (in)		Total Trunk dbh	Height (ft)	Canopy Diameter (ft)	Health Rating	Aesthetic Rating	Mature Tree
				1st Trunk	2nd Trunk						
31	Oregon ash	<i>Fraxinus latifolia</i>	1	8.2		8.2	30	25	3	3	
32	Oregon ash	<i>Fraxinus latifolia</i>	1	15.3		15.3	30	35	3	3	X
33	Oregon ash	<i>Fraxinus latifolia</i>	1	9.8		9.8	30	30	3	3	
34	toyon	<i>Heteromeles arbutifolia</i>	2	4.2	3.6	7.8	12	20	2	2	
35	strawberry tree	<i>Arbutus unedo</i>	2	6.5	2.5	9.0	14	18	2	2	
36	strawberry tree	<i>Arbutus unedo</i>	5	6.5	3.0	9.5	15	20	2	2	
37	strawberry tree	<i>Arbutus unedo</i>	2	8.0	8.0	16.0	25	25	3	3	X
38	Oregon ash	<i>Fraxinus latifolia</i>	1	16.4		16.4	30	35	3	3	X
39	strawberry tree	<i>Arbutus unedo</i>	3	3.3	3.0	6.3	12	20	2	2	
40	Oregon ash	<i>Fraxinus latifolia</i>	1	12.9		12.9	30	35	3	3	X
41	weeping bottlebrush	<i>Callistemon viminalis</i>	2	4.3	2.0	6.3	20	20	3	3	
42	weeping bottlebrush	<i>Callistemon viminalis</i>	2	4.3	4.3	8.6	12	25	3	3	
43	Oregon ash	<i>Fraxinus latifolia</i>	1	11.0		11.0	40	35	3	3	
44	weeping bottlebrush	<i>Callistemon viminalis</i>	5	3.0	3.0	6.0	20	25	3	3	
45	Oregon ash	<i>Fraxinus latifolia</i>	1	11.1		11.1	30	30	3	3	
46	strawberry tree	<i>Arbutus unedo</i>	3	5.0	3.6	8.6	15	18	3	3	
47	strawberry tree	<i>Arbutus unedo</i>	5	4.5	4.4	8.9	15	25	2	2	
48	strawberry tree	<i>Arbutus unedo</i>	3	5.2	5.0	10.2	20	25	3	3	
49	strawberry tree	<i>Arbutus unedo</i>	1	7.1		7.1	10	15	3	2	
50	Oregon ash	<i>Fraxinus latifolia</i>	1	11.0		11.0	30	25	3	3	
51	Oregon ash	<i>Fraxinus latifolia</i>	1	7.5		7.5	20	25	3	3	
52	Oregon ash	<i>Fraxinus latifolia</i>	1	10.6		10.6	30	25	3	3	
53	strawberry tree	<i>Arbutus unedo</i>	2	8.0	6.8	14.8	20	25	2	1	X
54	strawberry tree	<i>Arbutus unedo</i>	4	6.3	5.0	11.3	15	25	3	2	
55	Oregon ash	<i>Fraxinus latifolia</i>	1	13.4		13.4	30	35	3	3	X
56	Oregon ash	<i>Fraxinus latifolia</i>	1	14.6		14.6	55	35	4	4	X
57	shiny xylosma	<i>Xylosma congestum</i>	2	9.2	3.0	12.2	35	30	3	3	X
58	shiny xylosma	<i>Xylosma congestum</i>	1	10.0		10.0	35	25	3	3	
59	weeping bottlebrush	<i>Callistemon viminalis</i>	2	2.0	1.8	3.8	20	15	3	3	
60	weeping bottlebrush	<i>Callistemon viminalis</i>	5	4.9	2.0	6.9	20	25	3	3	

**TABLE A
TREE SURVEY DATA**

Tree Tag No.	Common Name	Tree Species	No. Main Trunks	dbh (in)		Total Trunk dbh	Height (ft)	Canopy Diameter (ft)	Health Rating	Aesthetic Rating	Mature Tree
				1st Trunk	2nd Trunk						
61	white mulberry	<i>Morus alba</i>	1	21.5		21.5	30	25	2	1	X
62	Peruvian peppertree	<i>Schinus molle</i>	1	37.8		37.8	50	40	3	3	X
63	Peruvian peppertree	<i>Schinus molle</i>	1	30.3		30.3	50	35	3	3	X
64	Peruvian peppertree	<i>Schinus molle</i>	1	39.0		39.0	50	40	3	2	X
65	Oregon ash	<i>Fraxinus latifolia</i>	1	5.3		5.3	18	15	3	3	
66	Fremont cottonwood	<i>Populus fremontii</i>	1	23.0		23.0	35	25	2	2	X
67	Peruvian peppertree	<i>Schinus molle</i>	1	41.1		41.1	50	35	3	3	X
68	loquat	<i>Eriobotrya japonica</i>	2	4.9	4.0	8.9	15	15	4	3	
69	silver dollar gum	<i>Eucalyptus polyanthemos</i>	1	33.3		33.3	50	50	3	3	X
70	Oregon ash	<i>Fraxinus latifolia</i>	1	8.5		8.5	18	22	3	3	
71	Peruvian peppertree	<i>Schinus molle</i>	1	31.0		31.0	50	40	3	3	X
72	Peruvian peppertree	<i>Schinus molle</i>	1	26.2		26.2	50	40	3	3	X
73	western sycamore	<i>Platanus racemosa</i>	1	28.0		28.0	65	55	3	3	X
74	Peruvian peppertree	<i>Schinus molle</i>	1	19.9		19.9	45	35	3	3	X
75	Peruvian peppertree	<i>Schinus molle</i>	1	24.3		24.3	50	35	3	3	X
76	Peruvian peppertree	<i>Schinus molle</i>	1	25.2		25.2	50	40	3	3	X
77	Peruvian peppertree	<i>Schinus molle</i>	1	23.3		23.3	45	40	3	3	X
78	Peruvian peppertree	<i>Schinus molle</i>	1	40.0		40.0	50	40	3	3	X
79	weeping bottlebrush	<i>Callistemon viminalis</i>	4	3.8	3.0	6.8	15	12	3	3	
80	weeping bottlebrush	<i>Callistemon viminalis</i>	4	4.2	4.0	8.2	22	20	3	3	
81	holm oak	<i>Quercus ilex</i>	1	4.6		4.6	25	8	3	3	
82	strawberry tree	<i>Arbutus unedo</i>	4	4.1	3.8	7.9	15	15	3	3	
83	strawberry tree	<i>Arbutus unedo</i>	3	4.0	4.0	8.0	10	10	3	3	
84	strawberry tree	<i>Arbutus unedo</i>	2	5.5	2.8	8.3	15	12	3	3	
85	shiny xylosma	<i>Xylosma congestum</i>	1	4.2		4.2	15	15	3	3	
86	holm oak	<i>Quercus ilex</i>	1	4.4		4.4	22	10	3	3	
87	holm oak	<i>Quercus ilex</i>	4	5.0	4.5	9.5	25	20	4	3	
88	Oregon ash	<i>Fraxinus latifolia</i>	1	7.7		7.7	20	10	3	3	
89	strawberry tree	<i>Arbutus unedo</i>	3	4.3	2.0	6.3	12	10	3	3	
90	goldenrain tree	<i>Koelreuteria bipinnata</i>	1	8.2		8.2	35	25	4	4	

**TABLE A
TREE SURVEY DATA**

Tree Tag No.	Common Name	Tree Species	No. Main Trunks	dbh (in)		Total Trunk dbh	Height (ft)	Canopy Diameter (ft)	Health Rating	Aesthetic Rating	Mature Tree
				1st Trunk	2nd Trunk						
91	strawberry tree	<i>Arbutus unedo</i>	1	5.5		5.5	12	10	3	3	
92	goldenrain tree	<i>Koelreuteria bipinnata</i>	1	12.4		12.4	35	35	4	4	X
93	strawberry tree	<i>Arbutus unedo</i>	3	5.5	5.0	10.5	12	10	3	3	
94	strawberry tree	<i>Arbutus unedo</i>	4	4.3	3.2	7.5	12	10	2	2	
95	strawberry tree	<i>Arbutus unedo</i>	2	5.4	4.1	9.5	12	15	3	3	
96	goldenrain tree	<i>Koelreuteria bipinnata</i>	1	12.0		12.0	35	30	4	4	X
97	holm oak	<i>Quercus ilex</i>	2	3.9	2.7	6.6	18	10	3	3	
98	holm oak	<i>Quercus ilex</i>	1	3.5		3.5	20	15	3	3	
99	weeping bottlebrush	<i>Callistemon viminalis</i>	4	3.4	3.0	6.4	20	16	3	3	
100	weeping bottlebrush	<i>Callistemon viminalis</i>	6	4.0	3.6	7.6	15	20	3	3	
101	strawberry tree	<i>Arbutus unedo</i>	4	3.5	3.0	6.5	15	10	3	3	
102	goldenrain tree	<i>Koelreuteria bipinnata</i>	2	4.0	3.8	7.8	25	15	4	4	
103	strawberry tree	<i>Arbutus unedo</i>	1	7.0		7.0	20	20	3	3	
104	loquat	<i>Eriobotrya japonica</i>	2	6.7	6.1	12.8	40	30	3	3	X
105	strawberry tree	<i>Arbutus unedo</i>	7	5.2	5.2	10.4	18	25	3	3	
106	Oregon ash	<i>Fraxinus latifolia</i>	1	15.4		15.4	35	30	3	3	X
107	Brazilian peppertree	<i>Schinus terebinthifolius</i>	8	4.0	3.9	7.9	25	30	3	2	
108	Oregon ash	<i>Fraxinus latifolia</i>	1	12.6		12.6	30	20	3	3	X
109	strawberry tree	<i>Arbutus unedo</i>	5	9.3	7.3	16.6	20	30	3	3	X
110	goldenrain tree	<i>Koelreuteria bipinnata</i>	2	4.3	4.0	8.3	25	20	4	3	
111	Oregon ash	<i>Fraxinus latifolia</i>	1	7.5		7.5	20	10	3	3	
112	strawberry tree	<i>Arbutus unedo</i>	4	5.6	4.4	10.0	12	20	3	2	
113	strawberry tree	<i>Arbutus unedo</i>	4	4.5	3.9	8.4	12	16	3	3	
114	strawberry tree	<i>Arbutus unedo</i>	5	6.0	4.5	10.5	15	20	2	2	
115	cork oak	<i>Quercus suber</i>	1	19.8		19.8	40	35	3	3	X
116	cork oak	<i>Quercus suber</i>	1	30.8		30.8	40	35	3	2	X
117	cork oak	<i>Quercus suber</i>	1	12.2		12.2	25	15	3	2	X
118	cork oak	<i>Quercus suber</i>	1	22.2		22.2	40	40	3	3	X
119	silver dollar gum	<i>Eucalyptus polyanthemos</i>	1	38.5		38.5	50	50	4	4	X
120	Indian laurel fig	<i>Ficus microcarpa</i>	3	5.1	4.9	10.0	12	12	3	3	

**TABLE A
TREE SURVEY DATA**

Tree Tag No.	Common Name	Tree Species	No. Main Trunks	dbh (in)		Total Trunk dbh	Height (ft)	Canopy Diameter (ft)	Health Rating	Aesthetic Rating	Mature Tree
				1st Trunk	2nd Trunk						
121	sweetgum	<i>Liquidambar styraciflua</i>	2	20.3	13.6	33.9	60	20	3	3	X
122	western sycamore	<i>Platanus racemosa</i>	1	32.4		32.4	65	50	3	3	X
123	Mexican fan palm	<i>Washingtonia robusta</i>	1	17.2		17.2	45	8	3	3	X
124	Mexican fan palm	<i>Washingtonia robusta</i>	1	26.5		26.5	45	10	3	3	X
125	Peruvian peppertree	<i>Schinus molle</i>	1	36.0		36.0	60	50	3	3	X
126	Peruvian peppertree	<i>Schinus molle</i>	2	28.0	31.5	59.5	60	45	3	3	X
127	Peruvian peppertree	<i>Schinus molle</i>	1	24.0		24.0	35	25	3	2	X
128	holm oak	<i>Quercus ilex</i>	1	36.1		36.1	55	45	4	4	X
129	Aleppo pine	<i>Pinus halepensis</i>	1	27.9		27.9	60	50	3	3	X
130	holm oak	<i>Quercus ilex</i>	1	26.5		26.5	55	40	3	3	X
131	Chinese hackberry	<i>Celtis sinensis</i>	1	8.8		8.8	25	25	3	3	
132	holm oak	<i>Quercus ilex</i>	1	30.5		30.5	55	60	4	4	X
133	holm oak	<i>Quercus ilex</i>	1	11.9		11.9	25	30	4	4	
134	Mexican fan palm	<i>Washingtonia robusta</i>	1	31.7		31.7	40	10	3	3	X
135	Mexican fan palm	<i>Washingtonia robusta</i>	1	22.7		22.7	50	8	3	3	X
136	Moreton Bay fig	<i>Ficus macrophylla</i>	1	20.4		20.4	40	30	4	3	X
137	holm oak	<i>Quercus ilex</i>	1	16.3		16.3	50	40	4	3	X
138	holm oak	<i>Quercus ilex</i>	1	17.5		17.5	50	35	3	3	X
139	African fern pine	<i>Afrocarpus gracilior</i>	1	16.0		16.0	40	20	3	3	X
140	African fern pine	<i>Afrocarpus gracilior</i>	1	11.5		11.5	35	20	4	4	
141	Oregon ash	<i>Fraxinus latifolia</i>	1	16.6		16.6	30	30	3	3	X
142	Oregon ash	<i>Fraxinus latifolia</i>	1	15.6		15.6	30	25	3	3	X
143	silver dollar gum	<i>Eucalyptus polyanthemos</i>	1	42.8		42.8	65	45	4	3	X
144	holm oak	<i>Quercus ilex</i>	1	35.8		35.8	60	55	4	3	X
145	Peruvian peppertree	<i>Schinus molle</i>	1	20.2		20.2	45	30	3	2	X
146	holm oak	<i>Quercus ilex</i>	1	16.0		16.0	35	30	3	3	X
147	Peruvian peppertree	<i>Schinus molle</i>	1	19.1		19.1	35	25	3	2	X
148	holm oak	<i>Quercus ilex</i>	1	21.6		21.6	50	40	2	2	X
149	white mulberry	<i>Morus alba</i>	1	9.3		9.3	40	30	3	3	
150	tree of heaven	<i>Ailanthus altissima</i>	1	4.5		4.5	18	5	3	3	

**TABLE A
TREE SURVEY DATA**

Tree Tag No.	Common Name	Tree Species	No. Main Trunks	dbh (in)		Total Trunk dbh	Height (ft)	Canopy Diameter (ft)	Health Rating	Aesthetic Rating	Mature Tree
				1st Trunk	2nd Trunk						
151	Siberian elm	<i>Ulmus pumila</i>	2	4.0	3.5	7.5	30	20	3	3	
152	silver dollar gum	<i>Eucalyptus polyanthemos</i>	1	50.2		50.2	65	60	4	4	X
153	avocado	<i>Persea americana</i>	1	14.8		14.8	35	30	3	3	X
154	tipu	<i>Tipuana tipu</i>	1	24.0		24.0	70	55	4	4	X
155	tipu	<i>Tipuana tipu</i>	1	20.5		20.5	65	55	4	4	X
156	tipu	<i>Tipuana tipu</i>	1	18.6		18.6	65	45	4	4	X
157	Peruvian peppertree	<i>Schinus molle</i>	1	34.0		34.0	45	30	3	2	X
158	Peruvian peppertree	<i>Schinus molle</i>	1	40.8		40.8	50	40	3	2	X
159	red ironbark	<i>Eucalyptus sideroxylon</i>	1	25.0		25.0	65	35	3	3	X
160	red ironbark	<i>Eucalyptus sideroxylon</i>	1	17.7		17.7	45	25	2	1	X
161	red ironbark	<i>Eucalyptus sideroxylon</i>	1	23.5		23.5	65	35	2	1	X
162	red ironbark	<i>Eucalyptus sideroxylon</i>	1	17.6		17.6	50	20	3	3	X
163	red ironbark	<i>Eucalyptus sideroxylon</i>	1	20.7		20.7	55	20	3	3	X
164	red ironbark	<i>Eucalyptus sideroxylon</i>	1	22.2		22.2	60	35	3	3	X
165	red ironbark	<i>Eucalyptus sideroxylon</i>	1	28.2		28.2	70	35	3	3	X
166	Brazilian peppertree	<i>Schinus terebinthifolius</i>	1	19.3		19.3	30	35	2	2	X
167	western sycamore	<i>Platanus racemosa</i>	1	20.6		20.6	45	45	1	1	X
168	red ironbark	<i>Eucalyptus sideroxylon</i>	1	35.2		35.2	70	45	3	3	X
169	holm oak	<i>Quercus ilex</i>	1	28.9		28.9	40	50	3	3	X
170	coast live oak	<i>Quercus agrifolia</i>	1	10.9		10.9	25	30	3	3	
171	holm oak	<i>Quercus ilex</i>	1	32.8		32.8	60	55	3	3	X
172	red ironbark	<i>Eucalyptus sideroxylon</i>	1	34.7		34.7	55	35	3	2	X
173	western sycamore	<i>Platanus racemosa</i>	1	28.1		28.1	55	45	2	1	X
174	silver dollar gum	<i>Eucalyptus polyanthemos</i>	1	38.1		38.1	70	45	3	3	X
175	coast live oak	<i>Quercus agrifolia</i>	1	16.2		16.2	35	35	3	3	X
176	silver dollar gum	<i>Eucalyptus polyanthemos</i>	1	37.5		37.5	60	55	3	3	X
177	coast live oak	<i>Quercus agrifolia</i>	1	18.0		18.0	40	40	4	3	X
178	silver dollar gum	<i>Eucalyptus polyanthemos</i>	1	34.5		34.5	75	55	3	3	X
179	Indian laurel fig	<i>Ficus microcarpa</i>	1	26.2		26.2	35	55	3	3	X
180	Siberian elm	<i>Ulmus pumila</i>	3	5.1	5.0	10.1	30	25	3	3	

**TABLE A
TREE SURVEY DATA**

Tree Tag No.	Common Name	Tree Species	No. Main Trunks	dbh (in)		Total Trunk dbh	Height (ft)	Canopy Diameter (ft)	Health Rating	Aesthetic Rating	Mature Tree
				1st Trunk	2nd Trunk						
181	avocado	<i>Persea americana</i>	1	15.9		15.9	25	30	2	2	X
182	Aleppo pine	<i>Pinus halepensis</i>	1	10.5		10.5	25	15	4	4	
183	Aleppo pine	<i>Pinus halepensis</i>	1	8.4		8.4	30	12	4	4	
184	Aleppo pine	<i>Pinus halepensis</i>	1	10.2		10.2	30	15	4	4	
185	Aleppo pine	<i>Pinus halepensis</i>	1	8.5		8.5	30	15	4	4	
186	avocado	<i>Persea americana</i>	2	16.2	16.2	32.4	30	30	2	2	X
187	white mulberry	<i>Morus alba</i>	1	17.0		17.0	35	25	4	4	X
188	goldenrain tree	<i>Koelreuteria bipinnata</i>	1	8.2		8.2	35	25	4	4	
189	goldenrain tree	<i>Koelreuteria bipinnata</i>	1	11.6		11.6	35	30	4	4	
190	avocado	<i>Persea americana</i>	1	25.5		25.5	35	40	3	3	X
191	avocado	<i>Persea americana</i>	1	17.2		17.2	35	35	3	3	X
192	Oregon ash	<i>Fraxinus latifolia</i>	1	23.0		23.0	35	40	4	4	X
193	date palm	<i>Phoenix dactylifera</i>	1	18.6		18.6	25	12	3	3	X
194	Oregon ash	<i>Fraxinus latifolia</i>	1	6.5		6.5	18	12	3	3	
195	Indian laurel fig	<i>Ficus microcarpa</i>	1	17.9		17.9	45	40	3	3	X
196	weeping bottlebrush	<i>Callistemon viminalis</i>	1	8.2		8.2	22	15	3	3	
197	white mulberry	<i>Morus alba</i>	1	25.9		25.9	30	25	2	2	X
198	avocado	<i>Persea americana</i>	1	18.0		18.0	25	25	4	3	X
199	avocado	<i>Persea americana</i>	1	16.2		16.2	25	20	4	4	X
200	loquat	<i>Eriobotrya japonica</i>	1	16.9		16.9	50	50	4	4	X
201	Japanese cheesewood	<i>Pittosporum tobira</i>	1	8.1		8.1	15	25	4	4	
202	loquat	<i>Eriobotrya japonica</i>	1	16.7		16.7	45	45	4	4	X
203	white mulberry	<i>Morus alba</i>	1	30.8		30.8	45	55	3	3	X
204	Oregon ash	<i>Fraxinus latifolia</i>	1	15.9		15.9	35	30	3	3	X
205	goldenrain tree	<i>Koelreuteria bipinnata</i>	1	8.5		8.5	30	30	4	4	
206	Oregon ash	<i>Fraxinus latifolia</i>	1	10.0		10.0	25	20	3	3	
207	Oregon ash	<i>Fraxinus latifolia</i>	1	12.0		12.0	30	25	3	2	X
208	Oregon ash	<i>Fraxinus latifolia</i>	2	21.7	12.4	34.1	45	45	3	2	X
209	Aleppo pine	<i>Pinus halepensis</i>	1	37.9		37.9	60	55	4	4	X
210	Mexican fan palm	<i>Washingtonia robusta</i>	1	8.5		8.5	10	10	3	3	

**TABLE A
TREE SURVEY DATA**

Tree Tag No.	Common Name	Tree Species	No. Main Trunks	dbh (in)		Total Trunk dbh	Height (ft)	Canopy Diameter (ft)	Health Rating	Aesthetic Rating	Mature Tree
				1st Trunk	2nd Trunk						
211	Oregon ash	<i>Fraxinus latifolia</i>	2	4.2	3.8	8.0	15	20	3	3	
212	Oregon ash	<i>Fraxinus latifolia</i>	4	4.1	2.5	6.6	20	15	3	3	
213	Oregon ash	<i>Fraxinus latifolia</i>	1	11.3		11.3	35	30	2	2	
214	Oregon ash	<i>Fraxinus latifolia</i>	1	24.2		24.2	45	50	2	2	X
215	Moreton Bay fig	<i>Ficus macrophylla</i>	3	8.7	8.3	17.0	35	30	4	4	X
216	Oregon ash	<i>Fraxinus latifolia</i>	1	13.0		13.0	25	20	3	3	X
217	Siberian elm	<i>Ulmus pumila</i>	1	4.7		4.7	20	12	4	4	
218	Siberian elm	<i>Ulmus pumila</i>	1	21.6		21.6	35	25	4	3	X
219	Oregon ash	<i>Fraxinus latifolia</i>	1	11.7		11.7	25	30	3	3	
220	Aleppo pine	<i>Pinus halepensis</i>	1	31.2		31.2	70	35	4	4	X
221	Oregon ash	<i>Fraxinus latifolia</i>	1	13.1		13.1	35	20	3	3	X
222	Oregon ash	<i>Fraxinus latifolia</i>	1	10.8		10.8	20	20	3	3	
223	Oregon ash	<i>Fraxinus latifolia</i>	1	20.6		20.6	35	30	3	3	X
224	Brazilian peppertree	<i>Schinus terebinthifolius</i>	1	18.0		18.0	25	35	4	4	X
225	silver dollar gum	<i>Eucalyptus polyanthemus</i>	1	39.2		39.2	70	55	3	3	X
226	Aleppo pine	<i>Pinus halepensis</i>	2	24.3	23.5	47.8	65	45	4	3	X
227	Oregon ash	<i>Fraxinus latifolia</i>	1	22.4		22.4	35	40	3	3	X
228	Oregon ash	<i>Fraxinus latifolia</i>	1	22.3		22.3	40	35	3	3	X
229	Oregon ash	<i>Fraxinus latifolia</i>	1	23.7		23.7	45	45	3	3	X
230	Oregon ash	<i>Fraxinus latifolia</i>	1	22.2		22.2	35	40	3	3	X
231	Oregon ash	<i>Fraxinus latifolia</i>	1	12.6		12.6	18	25	3	3	X
232	red flowering gum	<i>Corymbia ficifolia</i>	1	17.4		17.4	30	30	4	4	X
233	red flowering gum	<i>Corymbia ficifolia</i>	1	13.1		13.1	30	35	4	4	X
234	Oregon ash	<i>Fraxinus latifolia</i>	1	39.8		39.8	65	40	4	4	X
235	Oregon ash	<i>Fraxinus latifolia</i>	1	35.4		35.4	75	45	4	3	X
236	Oregon ash	<i>Fraxinus latifolia</i>	2	7.3	7.3	14.6	25	25	2	2	X
237	shamel ash	<i>Fraxinus uhdei</i>	3	6.4	5.2	11.6	30	20	3	3	
238	Mexican fan palm	<i>Washingtonia robusta</i>	1	16.5		16.5	25	10	4	3	X
239	Mexican fan palm	<i>Washingtonia robusta</i>	1	15.8		15.8	60	8	4	4	X
240	Mexican fan palm	<i>Washingtonia robusta</i>	1	12.7		12.7	60	8	4	4	X

**TABLE A
TREE SURVEY DATA**

Tree Tag No.	Common Name	Tree Species	No. Main Trunks	dbh (in)		Total Trunk dbh	Height (ft)	Canopy Diameter (ft)	Health Rating	Aesthetic Rating	Mature Tree
				1st Trunk	2nd Trunk						
241	Mexican fan palm	<i>Washingtonia robusta</i>	1	13.6		13.6	60	8	4	4	X
242	Mexican fan palm	<i>Washingtonia robusta</i>	1	15.8		15.8	60	8	4	4	X
243	Mexican fan palm	<i>Washingtonia robusta</i>	1	16.4		16.4	60	8	4	4	X
244	Mexican fan palm	<i>Washingtonia robusta</i>	1	19.0		19.0	60	8	4	4	X
245	Mexican fan palm	<i>Washingtonia robusta</i>	1	16.7		16.7	60	8	4	4	X
246	Mexican fan palm	<i>Washingtonia robusta</i>	2	36.0	16.0	52.0	50	15	4	3	X
247	Mexican fan palm	<i>Washingtonia robusta</i>	1	15.5		15.5	60	8	4	3	X
248	weeping bottlebrush	<i>Callistemon viminalis</i>	3	4.8	4.7	9.5	15	12	4	3	
249	pomegranate	<i>Punica protopunica</i>	2	8.1	8.0	16.1	15	20	3	2	X
250	pomegranate	<i>Punica protopunica</i>	2	6.2	6.2	12.4	15	12	3	2	X
251	Mexican fan palm	<i>Washingtonia robusta</i>	1	22.0		22.0	50	10	3	3	X
252	Mexican fan palm	<i>Washingtonia robusta</i>	1	17.3		17.3	50	10	3	3	X
253	Oregon ash	<i>Fraxinus latifolia</i>	1	12.1		12.1	30	35	3	3	X
254	Mexican fan palm	<i>Washingtonia robusta</i>	1	13.9		13.9	60	8	4	4	X
255	Mexican fan palm	<i>Washingtonia robusta</i>	1	14.6		14.6	60	8	4	4	X
256	Mexican fan palm	<i>Washingtonia robusta</i>	1	15.5		15.5	60	8	4	4	X
257	Mexican fan palm	<i>Washingtonia robusta</i>	1	13.4		13.4	60	8	4	4	X
258	Mexican fan palm	<i>Washingtonia robusta</i>	1	15.6		15.6	60	8	4	4	X
259	Mexican fan palm	<i>Washingtonia robusta</i>	1	16.6		16.6	60	8	4	4	X
260	Mexican fan palm	<i>Washingtonia robusta</i>	1	12.8		12.8	60	8	4	4	X
261	silver dollar gum	<i>Eucalyptus polyanthemos</i>	1	31.4		31.4	60	40	4	3	X
262	silver dollar gum	<i>Eucalyptus polyanthemos</i>	1	34.0		34.0	60	55	4	4	X
263	silver dollar gum	<i>Eucalyptus polyanthemos</i>	1	36.4		36.4	60	40	4	4	X
264	silver dollar gum	<i>Eucalyptus polyanthemos</i>	1	37.0		37.0	60	35	4	3	X
265	Aleppo pine	<i>Pinus halepensis</i>	1	39.0		39.0	60	50	4	4	X
266	Peruvian peppertree	<i>Schinus molle</i>	1	51.1		51.1	50	65	4	2	X
267	Holm oak	<i>Quercus ilex</i>	1	36.6		36.6	55	70	3	3	X
268	Indian laurel fig	<i>Ficus microcarpa</i>	1	8.2		8.2	35	25	4	3	
269	Catalina cherry	<i>Prunus ilicifolia</i> ssp. <i>lyonii</i>	1	10.4		10.4	30	30	1	1	
270	Mexican fan palm	<i>Washingtonia robusta</i>	1	19.9		19.9	65	8	4	4	X

**TABLE A
TREE SURVEY DATA**

Tree Tag No.	Common Name	Tree Species	No. Main Trunks	dbh (in)		Total Trunk dbh	Height (ft)	Canopy Diameter (ft)	Health Rating	Aesthetic Rating	Mature Tree
				1st Trunk	2nd Trunk						
271	Holm oak	<i>Quercus ilex</i>	1	15.7		15.7	40	35	4	3	X
272	tipu	<i>Tipuana tipu</i>	1	9.8		9.8	35	35	4	3	
273	lemon	<i>Citrus x Limon</i>	1	9.1		9.1	15	18	3	3	
274	black willow	<i>Salix gooddingii</i>	1	11.8		11.8	40	30	4	4	
275	black locust	<i>Robinia pseudoacacia</i>	1	17.9		17.9	40	35	4	4	X
276	black locust	<i>Robinia pseudoacacia</i>	1	17.2		17.2	40	30	4	3	X
277	black locust	<i>Robinia pseudoacacia</i>	1	6.5		6.5	25	22	1	1	
278	black locust	<i>Robinia pseudoacacia</i>	1	8.7		8.7	40	25	2	2	
279	holm oak	<i>Quercus ilex</i>	1	27.6		27.6	50	45	4	4	X
280	holm oak	<i>Quercus ilex</i>	1	27.4		27.4	50	45	4	4	X
281	Oregon ash	<i>Fraxinus latifolia</i>	1	16.4		16.4	30	35	3	3	X
282	Oregon ash	<i>Fraxinus latifolia</i>	1	10.6		10.6	25	15	3	3	
283	crybabytree	<i>Erythrina crista-galli</i>	1	20.5		20.5	20	25	2	2	X
284	red flowering gum	<i>Corymbia ficifolia</i>	1	13.4		13.4	25	20	3	3	X
285	Oregon ash	<i>Fraxinus latifolia</i>	1	18.0		18.0	25	30	3	3	X
286	Mexican fan palm	<i>Washingtonia robusta</i>	1	19.7		19.7	50	10	4	4	X
287	Oregon ash	<i>Fraxinus latifolia</i>	1	14.4		14.4	25	30	3	3	X
288	Mexican fan palm	<i>Washingtonia robusta</i>	1	18.6		18.6	50	10	4	3	X
289	Oregon ash	<i>Fraxinus latifolia</i>	1	17.1		17.1	25	25	3	3	X
290	orange	<i>Citrus x sinensis</i>	3	6.7	3.9	10.6	12	20	3	3	
291	Chinese juniper	<i>Juniperus chinensis</i>	2	9.4	6.2	15.6	25	15	4	3	X
292	Oregon ash	<i>Fraxinus latifolia</i>	1	15.3		15.3	25	25	3	3	X
293	tipu	<i>Tipuana tipu</i>	1	19.5		19.5	60	45	4	4	X
294	tipu	<i>Tipuana tipu</i>	1	23.5		23.5	60	45	4	4	X
295	Oregon ash	<i>Fraxinus latifolia</i>	1	18.4		18.4	30	25	3	3	X
296	Oregon ash	<i>Fraxinus latifolia</i>	1	13.6		13.6	25	30	3	3	X
297	Oregon ash	<i>Fraxinus latifolia</i>	1	18.7		18.7	25	30	3	3	X
298	Oregon ash	<i>Fraxinus latifolia</i>	1	13.8		13.8	25	20	3	3	X
299	Oregon ash	<i>Fraxinus latifolia</i>	1	19.9		19.9	25	30	3	3	X
300	Oregon ash	<i>Fraxinus latifolia</i>	1	15.4		15.4	25	30	3	3	X

**TABLE A
TREE SURVEY DATA**

Tree Tag No.	Common Name	Tree Species	No. Main Trunks	dbh (in)		Total Trunk dbh	Height (ft)	Canopy Diameter (ft)	Health Rating	Aesthetic Rating	Mature Tree
				1st Trunk	2nd Trunk						
301	Oregon ash	<i>Fraxinus latifolia</i>	1	7.4		7.4	20	18	3	3	
302	silktree	<i>Albizia julibrissin</i>	1	6.7		6.7	22	15	4	4	
303	pomegranate	<i>Punica protopunica</i>	2	8.3	5.0	13.3	15	8	3	3	X
304	apricot	<i>Prunus armeniaca</i>	2	5.5	4.2	9.7	15	12	4	4	
305	Chinese hackberry	<i>Celtis sinensis</i>	3	15.2	14.5	29.7	35	35	4	4	X
306	Oregon ash	<i>Fraxinus latifolia</i>	1	9.2		9.2	30	30	3	3	
307	Oregon ash	<i>Fraxinus latifolia</i>	1	12.6		12.6	30	25	3	3	X
308	orange	<i>Citrus x sinensis</i>	6	5.2	3.6	8.8	15	12	3	3	
309	Oregon ash	<i>Fraxinus latifolia</i>	1	11.5		11.5	20	25	3	3	
310	white mulberry	<i>Morus alba</i>	1	30.9		30.9	35	35	3	3	X
311	Aleppo pine	<i>Pinus halepensis</i>	1	15.6		15.6	30	40	4	3	X
312	Oregon ash	<i>Fraxinus latifolia</i>	1	10.9		10.9	30	25	3	3	
313	glossy privet	<i>Ligustrum lucidum</i>	1	10.7		10.7	30	35	3	3	
314	octopus tree	<i>Schefflera actinophylla</i>	3	7.0	6.5	13.5	15	12	4	3	X
315	avocado	<i>Persea americana</i>	1	26.9		26.9	40	35	3	3	X
316	Oregon ash	<i>Fraxinus latifolia</i>	1	9.2		9.2	22	20	3	3	
317	Oregon ash	<i>Fraxinus latifolia</i>	1	11.5		11.5	30	25	3	3	
318	Indian laurel fig	<i>Ficus microcarpa</i>	2	20.0	9.0	29.0	55	45	3	3	X
319	Oregon ash	<i>Fraxinus latifolia</i>	1	16.6		16.6	30	25	3	3	X
320	Mexican fan palm	<i>Washingtonia robusta</i>	1	24.0		24.0	25	12	4	3	X
321	avocado	<i>Persea americana</i>	1	24.7		24.7	35	40	3	3	X
322	Mexican fan palm	<i>Washingtonia robusta</i>	1	23.4		23.4	55	10	4	3	X
323	Oregon ash	<i>Fraxinus latifolia</i>	1	11.2		11.2	25	25	3	3	
324	tree of heaven	<i>Ailanthus altissima</i>	3	19.4	15.4	34.8	55	40	4	4	X
325	tree of heaven	<i>Ailanthus altissima</i>	3	19.1	14.1	33.2	50	45	4	4	X
326	Oregon ash	<i>Fraxinus latifolia</i>	1	15.0		15.0	35	30	3	3	X
327	avocado	<i>Persea americana</i>	1	22.3		22.3	25	20	2	2	X
328	Oregon ash	<i>Fraxinus latifolia</i>	1	12.2		12.2	25	30	3	3	X
329	avocado	<i>Persea americana</i>	1	14.6		14.6	30	35	1	1	X
330	lemon	<i>Citrus x Limon</i>	2	8.8	6.9	15.7	25	25	3	3	X

**TABLE A
TREE SURVEY DATA**

Tree Tag No.	Common Name	Tree Species	No. Main Trunks	dbh (in)		Total Trunk dbh	Height (ft)	Canopy Diameter (ft)	Health Rating	Aesthetic Rating	Mature Tree
				1st Trunk	2nd Trunk						
331	Peruvian peppertree	<i>Schinus molle</i>	1	54.3		54.3	40	45	4	2	X
332	cork oak	<i>Quercus suber</i>	1	27.9		27.9	50	55	4	3	X
333	cork oak	<i>Quercus suber</i>	1	25.8		25.8	50	45	4	3	X
334	silver dollar gum	<i>Eucalyptus polyanthemos</i>	1	31.6		31.6	65	65	4	4	X
335	cork oak	<i>Quercus suber</i>	1	31.3		31.3	55	65	4	4	X
336	cork oak	<i>Quercus suber</i>	1	31.0		31.0	50	35	2	1	X
337	tree of heaven	<i>Ailanthus altissima</i>	2	6.2	3.8	10.0	35	20	4	4	
338	cork oak	<i>Quercus suber</i>	1	29.3		29.3	40	50	3	3	X
339	cork oak	<i>Quercus suber</i>	1	27.1		27.1	40	50	3	3	X
340	Mexican fan palm	<i>Washingtonia robusta</i>	1	14.3		14.3	30	12	3	3	X
341	tree of heaven	<i>Ailanthus altissima</i>	1	5.5		5.5	30	12	4	4	
342	holm oak	<i>Quercus ilex</i>	1	38.1		38.1	55	55	4	4	X
343	white mulberry	<i>Morus alba</i>	1	9.4		9.4	25	30	4	3	
344	Peruvian peppertree	<i>Schinus molle</i>	1	38.6		38.6	65	55	4	3	X
345	Mexican fan palm	<i>Washingtonia robusta</i>	1	33.9		33.9	35	12	3	3	X
346	Peruvian peppertree	<i>Schinus molle</i>	1	34.2		34.2	40	35	4	3	X
347	Brazilian peppertree	<i>Schinus terebinthifolius</i>	1	26.2		26.2	45	40	3	3	X
348	holm oak	<i>Quercus ilex</i>	1	26.2		26.2	45	40	2	2	X
349	cork oak	<i>Quercus suber</i>	1	16.6		16.6	40	35	3	3	X
350	cork oak	<i>Quercus suber</i>	1	18.7		18.7	40	35	2	2	X
351	cork oak	<i>Quercus suber</i>	1	25.6		25.6	40	45	3	2	X
352	cork oak	<i>Quercus suber</i>	1	30.3		30.3	45	45	4	3	X
353	lemon	<i>Citrus x Limon</i>	7	4.5	3.9	8.4	20	25	3	3	
354	Western sycamore	<i>Platanus racemosa</i>	1	27.3		27.3	65	45	4	3	X
355	cork oak	<i>Quercus suber</i>	1	20.7		20.7	45	40	2	2	X
356	cork oak	<i>Quercus suber</i>	1	16.6		16.6	40	45	4	3	X
357	Western sycamore	<i>Platanus racemosa</i>	1	31.7		31.7	60	60	4	3	X
358	holm oak	<i>Quercus ilex</i>	1	31.5		31.5	60	50	4	3	X
359	holm oak	<i>Quercus ilex</i>	1	43.3		43.3	60	65	4	3	X
360	cork oak	<i>Quercus suber</i>	1	10.2		10.2	25	20	4	3	

**TABLE A
TREE SURVEY DATA**

Tree Tag No.	Common Name	Tree Species	No. Main Trunks	dbh (in)		Total Trunk dbh	Height (ft)	Canopy Diameter (ft)	Health Rating	Aesthetic Rating	Mature Tree
				1st Trunk	2nd Trunk						
361	cork oak	<i>Quercus suber</i>	1	31.5		31.5	60	45	4	3	X
362	silver dollar gum	<i>Eucalyptus polyanthemos</i>	1	40.3		40.3	65	50	4	4	X
363	Peruvian peppertree	<i>Schinus molle</i>	1	31.6		31.6	40	40	4	3	X
364	Peruvian peppertree	<i>Schinus molle</i>	1	22.1		22.1	40	40	4	3	X
365	Peruvian peppertree	<i>Schinus molle</i>	1	32.3		32.3	35	35	4	3	X
366	Oregon ash	<i>Fraxinus latifolia</i>	1	16.4		16.4	25	30	3	3	X
367	Oregon ash	<i>Fraxinus latifolia</i>	1	23.2		23.2	30	40	3	3	X
368	Peruvian peppertree	<i>Schinus molle</i>	1	26.0		26.0	25	25	4	2	X
369	Peruvian peppertree	<i>Schinus molle</i>	1	39.8		39.8	30	40	4	3	X
370	holm oak	<i>Quercus ilex</i>	1	29.2		29.2	55	60	4	4	X
371	cork oak	<i>Quercus suber</i>	1	34.0		34.0	60	50	4	3	X
372	Peruvian peppertree	<i>Schinus molle</i>	1	35.2		35.2	30	35	4	3	X
373	Mexican fan palm	<i>Washingtonia robusta</i>	1	16.4		16.4	45	10	4	3	X
374	Mexican fan palm	<i>Washingtonia robusta</i>	1	33.1		33.1	40	12	4	3	X
375	Mexican fan palm	<i>Washingtonia robusta</i>	1	16.6		16.6	55	10	4	3	X
376	holm oak	<i>Quercus ilex</i>	1	17.7		17.7	40	40	4	4	X
377	toyon	<i>Heteromeles arbutifolia</i>	1	9.9		9.9	25	30	4	4	
378	white mulberry	<i>Morus alba</i>	1	21.0		21.0	35	35	3	3	X
379	holm oak	<i>Quercus ilex</i>	4	9.8	7.4	17.2	45	40	4	3	X
380	holm oak	<i>Quercus ilex</i>	1	23.2		23.2	50	50	4	3	X
381	Oregon ash	<i>Fraxinus latifolia</i>	1	10.5		10.5	30	25	3	3	
382	Oregon ash	<i>Fraxinus latifolia</i>	1	10.5		10.5	25	30	3	3	
383	Oregon ash	<i>Fraxinus latifolia</i>	1	8.4		8.4	22	20	3	3	
384	paper mulberry	<i>Broussonetia papyrifera</i>	2	31.8	30.1	61.9	35	45	2	1	X
385	paper mulberry	<i>Broussonetia papyrifera</i>	6	4.8	2.9	7.7	25	25	3	3	
386	paper mulberry	<i>Broussonetia papyrifera</i>	5	5.6	5.0	10.6	25	30	3	3	
387	holm oak	<i>Quercus ilex</i>	8	24.6	15.2	39.8	60	60	4	3	X
388	China berry	<i>Melia azedarach</i>	2	32.8	19.6	52.4	20	15	3	2	X
389	toyon	<i>Heteromeles arbutifolia</i>	2	7.9	5.1	13.0	55	45	3	2	X
390	white mulberry	<i>Morus alba</i>	1	25.3		25.3	30	30	3	3	X

**TABLE A
TREE SURVEY DATA**

Tree Tag No.	Common Name	Tree Species	No. Main Trunks	dbh (in)		Total Trunk dbh	Height (ft)	Canopy Diameter (ft)	Health Rating	Aesthetic Rating	Mature Tree
				1st Trunk	2nd Trunk						
391	holm oak	<i>Quercus ilex</i>	1	26.3		26.3	55	50	2	2	X
392	Mexican fan palm	<i>Washingtonia robusta</i>	2	32.1	32.0	64.1	40	20	4	3	X
393	Mexican fan palm	<i>Washingtonia robusta</i>	1	14.2		14.2	55	8	4	3	X
394	cork oak	<i>Quercus suber</i>	1	27.5		27.5	55	45	3	3	X
395	coast live oak	<i>Quercus agrifolia</i>	1	16.6		16.6	35	40	4	4	X
396	silver dollar gum	<i>Eucalyptus polyanthemos</i>	1	20.5		20.5	55	50	4	3	X
397	silver dollar gum	<i>Eucalyptus polyanthemos</i>	1	41.0		41.0	70	60	4	3	X
398	holm oak	<i>Quercus ilex</i>	1	32.2		32.2	55	55	4	3	X
399	Mexican fan palm	<i>Washingtonia robusta</i>	1	16.9		16.9	60	10	4	3	X
400	silver dollar gum	<i>Eucalyptus polyanthemos</i>	1	45.2		45.2	70	65	4	3	X
401	pomegranate	<i>Punica protopunica</i>	2	6.8	6.0	12.8	20	20	3	3	X
402	cork oak	<i>Quercus suber</i>	1	26.7		26.7	45	45	4	3	X
403	Aleppo pine	<i>Pinus halepensis</i>	1	31.4		31.4	75	45	4	4	X
404	silver dollar gum	<i>Eucalyptus polyanthemos</i>	1	41.3		41.3	70	50	4	4	X
405	cork oak	<i>Quercus suber</i>	1	16.6		16.6	40	30	4	3	X
406	holm oak	<i>Quercus ilex</i>	1	24.2		24.2	45	45	4	3	X
407	Indian laurel fig	<i>Ficus microcarpa</i>	1	5.9		5.9	25	18	3	3	
408	Indian laurel fig	<i>Ficus microcarpa</i>	1	11.5		11.5	30	25	3	3	
409	Fremont cottonwood	<i>Populus fremontii</i>	1	26.7		26.7	55	45	4	3	X
410	cork oak	<i>Quercus suber</i>	1	22.4		22.4	50	45	4	3	X
411	Mexican plum	<i>Prunus mexicana</i>	1	14.1		14.1	35	25	4	4	X
412	cork oak	<i>Quercus suber</i>	1	39.8		39.8	65	55	3	3	X
413	cork oak	<i>Quercus suber</i>	1	13.7		13.7	25	20	3	3	X
414	holm oak	<i>Quercus ilex</i>	1	24.1		24.1	50	50	4	3	X
415	cork oak	<i>Quercus suber</i>	1	23.9		23.9	50	45	3	3	X
416	cork oak	<i>Quercus suber</i>	1	25.3		25.3	35	40	3	3	X
417	holm oak	<i>Quercus ilex</i>	1	14.4		14.4	40	30	3	3	X
418	Chinese elm	<i>Ulmus parvifolia</i>	1	25.3		25.3	60	65	4	4	X
419	Chinese elm	<i>Ulmus parvifolia</i>	1	14.8		14.8	60	50	4	4	X
420	Italian cypress	<i>Cupressus sempervirens</i>	1	14.1		14.1	55	4	4	4	X

**TABLE A
TREE SURVEY DATA**

Tree Tag No.	Common Name	Tree Species	No. Main Trunks	dbh (in)		Total Trunk dbh	Height (ft)	Canopy Diameter (ft)	Health Rating	Aesthetic Rating	Mature Tree
				1st Trunk	2nd Trunk						
421	Italian cypress	<i>Cupressus sempervirens</i>	1	14.0		14.0	55	4	4	4	X
422	cork oak	<i>Quercus suber</i>	1	15.1		15.1	50	35	3	3	X
423	Chinese elm	<i>Ulmus parvifolia</i>	1	18.2		18.2	65	55	4	4	X
424	cork oak	<i>Quercus suber</i>	1	27.9		27.9	50	45	3	3	X
425	cork oak	<i>Quercus suber</i>	1	15.8		15.8	40	35	4	4	X
426	red ironbark	<i>Eucalyptus sideroxylon</i>	1	21.2		21.2	70	55	4	4	X
427	Peruvian peppertree	<i>Schinus molle</i>	1	28.2		28.2	30	25	4	3	X
428	Peruvian peppertree	<i>Schinus molle</i>	1	23.6		23.6	30	25	4	3	X
429	holm oak	<i>Quercus ilex</i>	1	18.3		18.3	30	35	2	2	X
430	toyon	<i>Heteromeles arbutifolia</i>	2	6.8	5.8	12.6	18	25	4	4	X
431	holm oak	<i>Quercus ilex</i>	1	40.4		40.4	60	65	4	3	X
432	goldenrain tree	<i>Koelreuteria bipinnata</i>	1	8.9		8.9	30	25	4	4	
433	holm oak	<i>Quercus ilex</i>	1	38.1		38.1	70	65	3	3	X
434	holm oak	<i>Quercus ilex</i>	1	10.0		10.0	25	25	4	3	
435	Oregon ash	<i>Fraxinus latifolia</i>	1	26.4		26.4	35	30	3	3	X
436	Oregon ash	<i>Fraxinus latifolia</i>	1	38.3		38.3	40	35	2	2	X
437	Peruvian peppertree	<i>Schinus molle</i>	1	42.1		42.1	55	40	4	3	X
438	silver dollar gum	<i>Eucalyptus polyanthemos</i>	1	21.9		21.9	50	35	4	4	X
439	Peruvian peppertree	<i>Schinus molle</i>	1	37.0		37.0	40	40	4	3	X
440	holm oak	<i>Quercus ilex</i>	1	28.2		28.2	50	40	4	4	X
441	holm oak	<i>Quercus ilex</i>	1	24.6		24.6	50	45	4	4	X
442	holm oak	<i>Quercus ilex</i>	1	19.6		19.6	40	35	4	4	X
443	cork oak	<i>Quercus suber</i>	1	39.4		39.4	50	45	3	3	X
444	silver dollar gum	<i>Eucalyptus polyanthemos</i>	1	15.8		15.8	60	40	3	3	X
445	silver dollar gum	<i>Eucalyptus polyanthemos</i>	1	34.6		34.6	75	55	4	4	X
446	silver dollar gum	<i>Eucalyptus polyanthemos</i>	1	50.8		50.8	75	55	4	4	X
447	silver dollar gum	<i>Eucalyptus polyanthemos</i>	1	9.6		9.6	40	25	3	3	
448	silver dollar gum	<i>Eucalyptus polyanthemos</i>	1	14.9		14.9	40	30	4	4	X
449	holm oak	<i>Quercus ilex</i>	1	18.6		18.6	40	30	4	3	X
450	western sycamore	<i>Platanus racemosa</i>	1	22.2		22.2	50	25	4	3	X

**TABLE A
TREE SURVEY DATA**

Tree Tag No.	Common Name	Tree Species	No. Main Trunks	dbh (in)		Total Trunk dbh	Height (ft)	Canopy Diameter (ft)	Health Rating	Aesthetic Rating	Mature Tree
				1st Trunk	2nd Trunk						
451	silver dollar gum	<i>Eucalyptus polyanthemos</i>	1	40.0		40.0	60	50	4	4	X
452	silk tree	<i>Albizia julibrissin</i>	1	6.1		6.1	20	12	4	4	
453	African fern pine	<i>Afrocarpus gracilior</i>	1	4.7		4.7	18	12	4	4	
454	silver dollar gum	<i>Eucalyptus polyanthemos</i>	1	50.0		50.0	60	50	3	3	X
455	Oregon ash	<i>Fraxinus latifolia</i>	1	21.0		21.0	40	30	3	3	X
456	Oregon ash	<i>Fraxinus latifolia</i>	2	22.2	18.1	40.3	45	35	3	3	X
457	Peruvian peppertree	<i>Schinus molle</i>	1	32.8		32.8	40	35	4	3	X
458	Peruvian peppertree	<i>Schinus molle</i>	1	29.0		29.0	40	30	4	3	X
459	Peruvian peppertree	<i>Schinus molle</i>	1	48.1		48.1	40	45	4	3	X
460	Peruvian peppertree	<i>Schinus molle</i>	1	38.5		38.5	45	40	4	3	X
461	Peruvian peppertree	<i>Schinus molle</i>	1	41.9		41.9	45	45	4	3	X
462	Peruvian peppertree	<i>Schinus molle</i>	1	36.7		36.7	45	45	4	3	X
463	Peruvian peppertree	<i>Schinus molle</i>	1	26.0		26.0	45	40	4	3	X
464	holm oak	<i>Quercus ilex</i>	1	28.7		28.7	45	40	3	3	X
465	white mulberry	<i>Morus alba</i>	1	14.8		14.8	30	30	4	4	X
466	holm oak	<i>Quercus ilex</i>	1	28.8		28.8	35	50	4	3	X
467	Brazilian peppertree	<i>Schinus terebinthifolius</i>	2	14.6	14.0	28.6	20	25	2	2	X
468	Peruvian peppertree	<i>Schinus molle</i>	1	25.5		25.5	35	35	4	3	X
469	Peruvian peppertree	<i>Schinus molle</i>	1	41.3		41.3	35	35	4	3	X
470	Peruvian peppertree	<i>Schinus molle</i>	1	27.1		27.1	35	35	4	3	X
471	Chinese elm	<i>Ulmus parvifolia</i>	1	28.7		28.7	55	50	4	4	X
472	western sycamore	<i>Platanus racemosa</i>	1	32.4		32.4	55	45	4	4	X
473	Peruvian peppertree	<i>Schinus molle</i>	1	26.8		26.8	40	40	4	3	X
474	Mexican fan palm	<i>Washingtonia robusta</i>	1	13.2		13.2	55	8	4	3	X
475	Peruvian peppertree	<i>Schinus molle</i>	1	41.9		41.9	40	40	4	3	X
476	orange	<i>Citrus x sinensis</i>	1	5.2		5.2	15	15	4	4	
477	Peruvian peppertree	<i>Schinus molle</i>	1	46.4		46.4	40	35	4	3	X
478	Peruvian peppertree	<i>Schinus molle</i>	1	33.1		33.1	40	40	4	3	X
479	Peruvian peppertree	<i>Schinus molle</i>	1	44.0		44.0	45	40	4	3	X
480	holm oak	<i>Quercus ilex</i>	1	23.2		23.2	50	45	4	4	X

**TABLE A
TREE SURVEY DATA**

Tree Tag No.	Common Name	Tree Species	No. Main Trunks	dbh (in)		Total Trunk dbh	Height (ft)	Canopy Diameter (ft)	Health Rating	Aesthetic Rating	Mature Tree
				1st Trunk	2nd Trunk						
481	Peruvian peppertree	<i>Schinus molle</i>	1	27.2		27.2	45	40	4	3	X
482	Peruvian peppertree	<i>Schinus molle</i>	1	34.3		34.3	45	40	4	3	X
483	white mulberry	<i>Morus alba</i>	1	18.6		18.6	30	30	3	3	X
484	Peruvian peppertree	<i>Schinus molle</i>	1	18.2		18.2	45	40	4	3	X
485	holm oak	<i>Quercus ilex</i>	1	28.1		28.1	55	50	2	3	X
486	Peruvian peppertree	<i>Schinus molle</i>	1	30.4		30.4	55	50	4	3	X
487	lemon	<i>Citrus x limon</i>	1	7.5		7.5	12	12	3	3	
488	holm oak	<i>Quercus ilex</i>	1	23.4		23.4	50	50	4	3	X
489	Peruvian peppertree	<i>Schinus molle</i>	1	30.0		30.0	45	35	4	3	X
490	western sycamore	<i>Platanus racemosa</i>	1	7.2		7.2	35	20	3	2	
491	Peruvian peppertree	<i>Schinus molle</i>	1	24.2		24.2	45	35	4	3	X
492	Aleppo pine	<i>Pinus halepensis</i>	1	22.1		22.1	60	40	4	4	X
493	shamel ash	<i>Fraxinus uhdei</i>	2	9.5	8.0	17.5	35	25	4	4	X
494	Peruvian peppertree	<i>Schinus molle</i>	1	24.5		24.5	45	40	4	3	X
495	Peruvian peppertree	<i>Schinus molle</i>	1	28.6		28.6	45	35	4	3	X
496	Peruvian peppertree	<i>Schinus molle</i>	1	42.8		42.8	45	40	4	3	X
497	holm oak	<i>Quercus ilex</i>	1	25.8		25.8	45	55	4	3	X
498	Peruvian peppertree	<i>Schinus molle</i>	1	16.4		16.4	45	30	4	3	X
499	shamel ash	<i>Fraxinus uhdei</i>	1	5.5		5.5	22	10	4	4	
500	Peruvian peppertree	<i>Schinus molle</i>	1	25.3		25.3	40	40	4	3	X
501	Peruvian peppertree	<i>Schinus molle</i>	1	9.2		9.2	30	25	4	3	
502	Peruvian peppertree	<i>Schinus molle</i>	1	25.3		25.3	40	35	4	3	X
503	Peruvian peppertree	<i>Schinus molle</i>	1	22.2		22.2	35	30	4	3	X
504	Catalina cherry	<i>Prunus ilicifolia ssp. lyonii</i>	1	16.0		16.0	25	20	3	2	X
505	western sycamore	<i>Platanus racemosa</i>	1	37.2		37.2	70	55	4	4	X
506	Peruvian peppertree	<i>Schinus molle</i>	1	23.8		23.8	45	45	4	3	X
507	Peruvian peppertree	<i>Schinus molle</i>	1	21.9		21.9	25	40	4	3	X
508	Peruvian peppertree	<i>Schinus molle</i>	1	35.0		35.0	50	40	4	3	X
509	Peruvian peppertree	<i>Schinus molle</i>	1	30.6		30.6	45	40	4	3	X
510	Peruvian peppertree	<i>Schinus molle</i>	1	5.9		5.9	30	25	4	4	

**TABLE A
TREE SURVEY DATA**

Tree Tag No.	Common Name	Tree Species	No. Main Trunks	dbh (in)		Total Trunk dbh	Height (ft)	Canopy Diameter (ft)	Health Rating	Aesthetic Rating	Mature Tree
				1st Trunk	2nd Trunk						
511	Peruvian peppertree	<i>Schinus molle</i>	1	27.1		27.1	50	45	4	3	X
512	Fremont cottonwood	<i>Populus fremontii</i>	1	20.6		20.6	60	45	4	3	X
513	Fremont cottonwood	<i>Populus fremontii</i>	1	23.5		23.5	60	30	4	3	X
514	silver dollar gum	<i>Eucalyptus polyanthemos</i>	1	56.8		56.8	70	60	4	4	X
515	Fremont cottonwood	<i>Populus fremontii</i>	1	14.9		14.9	45	25	4	3	X
516	holm oak	<i>Quercus ilex</i>	2	18.2	17.7	35.9	55	40	4	3	X
517	white mulberry	<i>Morus alba</i>	2	16.6	15.8	32.4	35	35	4	3	X
518	white mulberry	<i>Morus alba</i>	1	23.4		23.4	35	35	4	3	X
519	Peruvian peppertree	<i>Schinus molle</i>	1	32.0		32.0	45	40	4	3	X
520	Peruvian peppertree	<i>Schinus molle</i>	1	36.4		36.4	45	40	4	3	X
521	Peruvian peppertree	<i>Schinus molle</i>	1	29.1		29.1	35	30	4	2	X
522	Aleppo pine	<i>Pinus halepensis</i>	1	22.3		22.3	55	45	4	4	X
523	western sycamore	<i>Platanus racemosa</i>	1	26.5		26.5	65	50	4	3	X
524	Peruvian peppertree	<i>Schinus molle</i>	1	33.1		33.1	45	35	4	3	X
525	Oregon ash	<i>Fraxinus latifolia</i>	1	24.3		24.3	35	45	1	1	X
526	Oregon ash	<i>Fraxinus latifolia</i>	2	14.0	12.5	26.5	35	40	2	2	X
527	silver dollar gum	<i>Eucalyptus polyanthemos</i>	2	26.0	24.8	50.8	65	50	4	4	X
528	Peruvian peppertree	<i>Schinus molle</i>	1	22.8		22.8	35	30	4	3	X
529	western sycamore	<i>Platanus racemosa</i>	1	25.1		25.1	45	35	4	3	X
530	holm oak	<i>Quercus ilex</i>	1	19.2		19.2	50	40	3	3	X
531	holm oak	<i>Quercus ilex</i>	1	24.8		24.8	55	40	3	3	X
532	holm oak	<i>Quercus ilex</i>	1	27.1		27.1	55	50	3	3	X
533	Peruvian peppertree	<i>Schinus molle</i>	1	35.5		35.5	35	40	4	3	X
534	Peruvian peppertree	<i>Schinus molle</i>	1	36.2		36.2	40	40	4	3	X
535	Peruvian peppertree	<i>Schinus molle</i>	1	21.3		21.3	40	35	4	4	X
536	Peruvian peppertree	<i>Schinus molle</i>	1	20.2		20.2	35	30	4	3	X
537	holm oak	<i>Quercus ilex</i>	1	25.5		25.5	55	50	4	3	X
538	Peruvian peppertree	<i>Schinus molle</i>	1	8.8		8.8	22	15	2	2	
539	western sycamore	<i>Platanus racemosa</i>	1	30.3		30.3	60	50	3	3	X
540	silver dollar gum	<i>Eucalyptus polyanthemos</i>	1	37.9		37.9	65	50	4	4	X

**TABLE A
TREE SURVEY DATA**

Tree Tag No.	Common Name	Tree Species	No. Main Trunks	dbh (in)		Total Trunk dbh	Height (ft)	Canopy Diameter (ft)	Health Rating	Aesthetic Rating	Mature Tree
				1st Trunk	2nd Trunk						
541	Peruvian peppertree	<i>Schinus molle</i>	1	34.1		34.1	35	40	4	3	X
542	Peruvian peppertree	<i>Schinus molle</i>	1	12.4		12.4	30	25	4	3	X
543	Peruvian peppertree	<i>Schinus molle</i>	1	22.1		22.1	40	35	4	3	X
544	Peruvian peppertree	<i>Schinus molle</i>	1	27.2		27.2	35	25	4	3	X
545	holm oak	<i>Quercus ilex</i>	1	28.0		28.0	50	50	4	4	X
546	holm oak	<i>Quercus ilex</i>	1	27.8		27.8	50	35	4	4	X
547	western sycamore	<i>Platanus racemosa</i>	1	25.9		25.9	45	45	4	3	X
548	Chinese elm	<i>Ulmus parvifolia</i>	1	29.7		29.7	30	40	4	3	X
549	holm oak	<i>Quercus ilex</i>	1	46.1		46.1	55	45	4	4	X
550	Peruvian peppertree	<i>Schinus molle</i>	1	43.3		43.3	45	35	4	3	X
551	Peruvian peppertree	<i>Schinus molle</i>	1	39.5		39.5	35	30	4	3	X
552	holm oak	<i>Quercus ilex</i>	1	47.8		47.8	60	60	4	4	X
553	tipu	<i>Tipuana tipu</i>	1	18.0		18.0	55	40	4	4	X
554	Peruvian peppertree	<i>Schinus molle</i>	1	51.0		51.0	55	40	4	3	X
555	Peruvian peppertree	<i>Schinus molle</i>	1	19.8		19.8	45	40	4	3	X
556	Peruvian peppertree	<i>Schinus molle</i>	1	28.9		28.9	45	45	4	3	X
557	Peruvian peppertree	<i>Schinus molle</i>	1	28.0		28.0	40	35	4	3	X
558	Peruvian peppertree	<i>Schinus molle</i>	1	29.2		29.2	40	25	4	3	X
559	Peruvian peppertree	<i>Schinus molle</i>	1	30.2		30.2	40	35	4	3	X
560	Peruvian peppertree	<i>Schinus molle</i>	1	19.4		19.4	40	30	4	3	X
561	Oregon ash	<i>Fraxinus latifolia</i>	1	20.0		20.0	45	30	3	3	X
562	Peruvian peppertree	<i>Schinus molle</i>	1	42.4		42.4	50	55	4	3	X
563	Oregon ash	<i>Fraxinus latifolia</i>	1	19.7		19.7	65	45	4	4	X
564	Oregon ash	<i>Fraxinus latifolia</i>	1	27.8		27.8	65	40	4	4	X
565	Oregon ash	<i>Fraxinus latifolia</i>	1	32.5		32.5	60	50	4	4	X
566	Oregon ash	<i>Fraxinus latifolia</i>	1	27.0		27.0	60	50	4	4	X
567	Oregon ash	<i>Fraxinus latifolia</i>	1	26.6		26.6	65	45	4	4	X
568	maidenhair tree	<i>Ginkgo biloba</i>	1	5.3		5.3	15	12	3	3	
569	blue gum	<i>Eucalyptus globulus</i>	1	21.1		21.1	85	35	4	4	X
570	blue gum	<i>Eucalyptus globulus</i>	1	22.7		22.7	85	45	4	4	X

**TABLE A
TREE SURVEY DATA**

Tree Tag No.	Common Name	Tree Species	No. Main Trunks	dbh (in)		Total Trunk dbh	Height (ft)	Canopy Diameter (ft)	Health Rating	Aesthetic Rating	Mature Tree
				1st Trunk	2nd Trunk						
571	Peruvian peppertree	<i>Schinus molle</i>	1	18.1		18.1	35	25	4	3	X
572	Brazilian peppertree	<i>Schinus terebinthifolius</i>	4	5.7	5.0	10.7	25	40	4	3	
573	Peruvian peppertree	<i>Schinus molle</i>	1	20.2		20.2	50	45	4	4	X
574	Peruvian peppertree	<i>Schinus molle</i>	1	14.5		14.5	30	30	4	3	X
575	Peruvian peppertree	<i>Schinus molle</i>	1	33.6		33.6	35	30	4	3	X
576	Peruvian peppertree	<i>Schinus molle</i>	1	24.0		24.0	35	30	4	3	X
577	Peruvian peppertree	<i>Schinus molle</i>	1	29.1		29.1	35	25	4	3	X
578	white mulberry	<i>Morus alba</i>	1	14.4		14.4	25	15	4	3	X
579	holm oak	<i>Quercus ilex</i>	2	19.3	15.6	34.9	55	50	2	3	X
580	silver dollar gum	<i>Eucalyptus polyanthemus</i>	1	40.0		40.0	75	60	4	4	X
581	Peruvian peppertree	<i>Schinus molle</i>	1	30.1		30.1	45	35	4	3	X
582	Peruvian peppertree	<i>Schinus molle</i>	1	27.1		27.1	45	35	4	3	X
583	Peruvian peppertree	<i>Schinus molle</i>	1	27.6		27.6	45	40	4	3	X
584	Peruvian peppertree	<i>Schinus molle</i>	1	15.3		15.3	40	25	4	3	X
585	Peruvian peppertree	<i>Schinus molle</i>	1	36.1		36.1	40	40	4	3	X
586	Peruvian peppertree	<i>Schinus molle</i>	1	13.9		13.9	40	25	4	3	X
587	Peruvian peppertree	<i>Schinus molle</i>	1	32.1		32.1	40	40	4	3	X
588	Peruvian peppertree	<i>Schinus molle</i>	1	31.1		31.1	40	45	4	3	X
589	Peruvian peppertree	<i>Schinus molle</i>	1	16.6		16.6	35	30	4	3	X
590	Peruvian peppertree	<i>Schinus molle</i>	1	37.2		37.2	30	20	2	2	X
591	Peruvian peppertree	<i>Schinus molle</i>	1	28.2		28.2	50	45	4	3	X
592	Peruvian peppertree	<i>Schinus molle</i>	1	22.2		22.2	45	35	4	3	X
593	Peruvian peppertree	<i>Schinus molle</i>	1	25.4		25.4	45	45	4	3	X
594	Italian cypress	<i>Cupressus sempervirens</i>	1	9.4		9.4	50	4	4	4	
595	Peruvian peppertree	<i>Schinus molle</i>	1	15.5		15.5	30	30	4	3	X
596	weeping bottlebrush	<i>Callistemon viminalis</i>	2	5.1	3.3	8.4	15	20	3	3	
597	weeping bottlebrush	<i>Callistemon viminalis</i>	1	5.2		5.2	15	15	3	3	
598	holm oak	<i>Quercus ilex</i>	1	23.2		23.2	50	45	4	3	X
599	Peruvian peppertree	<i>Schinus molle</i>	1	32.5		32.5	45	40	4	3	X
600	Oregon ash	<i>Fraxinus latifolia</i>	1	20.5		20.5	55	35	4	4	X

**TABLE A
TREE SURVEY DATA**

Tree Tag No.	Common Name	Tree Species	No. Main Trunks	dbh (in)		Total Trunk dbh	Height (ft)	Canopy Diameter (ft)	Health Rating	Aesthetic Rating	Mature Tree
				1st Trunk	2nd Trunk						
601	Oregon ash	<i>Fraxinus latifolia</i>	1	23.3		23.3	55	40	4	4	X
602	Oregon ash	<i>Fraxinus latifolia</i>	1	26.0		26.0	55	35	4	4	X
603	Oregon ash	<i>Fraxinus latifolia</i>	1	21.3		21.3	55	35	4	4	X
604	laurel-leaf snailseed	<i>Cocculus laurifolius</i>	1	6.3		6.3	15	20	4	4	
605	laurel-leaf snailseed	<i>Cocculus laurifolius</i>	1	7.3		7.3	25	15	4	4	
606	laurel-leaf snailseed	<i>Cocculus laurifolius</i>	2	6.5	6.2	12.7	25	25	4	4	X
607	laurel-leaf snailseed	<i>Cocculus laurifolius</i>	1	8.4		8.4	25	20	3	4	
608	honeylocust	<i>Gleditsia triacanthos</i>	1	14.0		14.0	35	25	4	4	X
609	laurel-leaf snailseed	<i>Cocculus laurifolius</i>	1	7.9		7.9	20	18	4	4	
610	honeylocust	<i>Gleditsia triacanthos</i>	1	20.7		20.7	35	35	3	3	X
611	laurel-leaf snailseed	<i>Cocculus laurifolius</i>	1	14.1		14.1	22	22	4	4	X
612	laurel-leaf snailseed	<i>Cocculus laurifolius</i>	1	8.7		8.7	22	20	4	4	
613	laurel-leaf snailseed	<i>Cocculus laurifolius</i>	2	8.1	7.0	15.1	20	20	4	4	X
614	laurel-leaf snailseed	<i>Cocculus laurifolius</i>	1	13.1		13.1	25	25	4	4	X
615	laurel-leaf snailseed	<i>Cocculus laurifolius</i>	1	16.6		16.6	25	35	4	4	X
616	goldenrain tree	<i>Koelreuteria bipinnata</i>	1	5.3		5.3	15	15	4	4	
617	Brazilian peppertree	<i>Schinus terebinthifolius</i>	1	15.6		15.6	25	25	4	4	X
618	Brazilian peppertree	<i>Schinus terebinthifolius</i>	1	13.2		13.2	25	22	4	4	X
619	Brazilian peppertree	<i>Schinus terebinthifolius</i>	1	16.6		16.6	25	25	4	4	X
620	Brazilian peppertree	<i>Schinus terebinthifolius</i>	1	18.1		18.1	20	18	4	4	X
621	Brazilian peppertree	<i>Schinus terebinthifolius</i>	1	20.4		20.4	22	25	4	4	X
622	Brazilian peppertree	<i>Schinus terebinthifolius</i>	1	11.9		11.9	15	20	4	4	
623	Brazilian peppertree	<i>Schinus terebinthifolius</i>	1	11.3		11.3	20	15	4	4	
624	laurel-leaf snailseed	<i>Cocculus laurifolius</i>	1	6.3		6.3	15	3	1	1	
625	laurel-leaf snailseed	<i>Cocculus laurifolius</i>	1	6.8		6.8	25	20	4	4	
626	laurel-leaf snailseed	<i>Cocculus laurifolius</i>	1	9.0		9.0	25	20	4	4	
627	laurel-leaf snailseed	<i>Cocculus laurifolius</i>	1	9.6		9.6	25	15	4	4	
628	laurel-leaf snailseed	<i>Cocculus laurifolius</i>	1	5.3		5.3	25	15	4	4	
629	laurel-leaf snailseed	<i>Cocculus laurifolius</i>	1	6.2		6.2	25	20	4	4	
630	laurel-leaf snailseed	<i>Cocculus laurifolius</i>	1	5.8		5.8	25	25	4	4	

**TABLE A
TREE SURVEY DATA**

Tree Tag No.	Common Name	Tree Species	No. Main Trunks	dbh (in)		Total Trunk dbh	Height (ft)	Canopy Diameter (ft)	Health Rating	Aesthetic Rating	Mature Tree
				1st Trunk	2nd Trunk						
631	laurel-leaf snailseed	<i>Cocculus laurifolius</i>	1	10.1		10.1	25	25	4	4	
632	laurel-leaf snailseed	<i>Cocculus laurifolius</i>	1	4.6		4.6	25	20	4	4	
633	laurel-leaf snailseed	<i>Cocculus laurifolius</i>	1	8.8		8.8	25	25	4	4	
634	Chinese elm	<i>Ulmus parvifolia</i>	1	13.9		13.9	55	40	4	4	X
635	Chinese elm	<i>Ulmus parvifolia</i>	1	16.5		16.5	55	40	4	4	X
636	laurel-leaf snailseed	<i>Cocculus laurifolius</i>	1	8.6		8.6	25	20	4	4	
637	Oregon ash	<i>Fraxinus latifolia</i>	1	5.8		5.8	50	25	4	4	
638	laurel-leaf snailseed	<i>Cocculus laurifolius</i>	1	7.3		7.3	20	25	4	3	
639	laurel-leaf snailseed	<i>Cocculus laurifolius</i>	1	7.8		7.8	25	30	4	3	
640	Chinese elm	<i>Ulmus parvifolia</i>	1	16.1		16.1	55	45	4	4	X
641	Chinese elm	<i>Ulmus parvifolia</i>	1	16.7		16.7	55	35	4	4	X
642	Chinese elm	<i>Ulmus parvifolia</i>	1	18.3		18.3	55	40	4	4	X
643	Chinese elm	<i>Ulmus parvifolia</i>	1	17.6		17.6	55	40	4	3	X
644	Chinese elm	<i>Ulmus parvifolia</i>	1	18.8		18.8	55	65	4	3	X
645	black poui	<i>Jacaranda mimosifolia</i>	1	22.1		22.1	55	55	4	4	X
646	western sycamore	<i>Platanus racemosa</i>	1	17.7		17.7	55	40	4	4	X
647	western sycamore	<i>Platanus racemosa</i>	1	20.7		20.7	70	45	4	3	X
648	western sycamore	<i>Platanus racemosa</i>	1	11.3		11.3	45	25	1	1	
649	Canary Island pine	<i>Pinus canariensis</i>	1	16.2		16.2	65	15	4	4	X
650	Canary Island pine	<i>Pinus canariensis</i>	1	17.7		17.7	65	35	4	4	X
651	Canary Island pine	<i>Pinus canariensis</i>	1	23.7		23.7	65	35	4	4	X
652	white mulberry	<i>Morus alba</i>	1	26.2		26.2	35	45	4	4	X
653	western sycamore	<i>Platanus racemosa</i>	1	15.2		15.2	45	35	4	4	X
654	western sycamore	<i>Platanus racemosa</i>	1	19.8		19.8	70	35	4	4	X
655	western sycamore	<i>Platanus racemosa</i>	1	7.8		7.8	25	4	1	1	
656	western sycamore	<i>Platanus racemosa</i>	1	15.5		15.5	50	35	4	4	X
657	western sycamore	<i>Platanus racemosa</i>	1	29.1		29.1	65	50	4	4	X
658	western sycamore	<i>Platanus racemosa</i>	1	20.5		20.5	50	30	4	4	X
659	goldenrain tree	<i>Koelreuteria bipinnata</i>	1	6.4		6.4	20	18	4	4	
660	Canary Island pine	<i>Pinus canariensis</i>	1	21.2		21.2	65	30	4	4	X

**TABLE A
TREE SURVEY DATA**

Tree Tag No.	Common Name	Tree Species	No. Main Trunks	dbh (in)		Total Trunk dbh	Height (ft)	Canopy Diameter (ft)	Health Rating	Aesthetic Rating	Mature Tree
				1st Trunk	2nd Trunk						
661	laurel-leaf snailseed	<i>Cocculus laurifolius</i>	2	11.8	2.9	14.7	25	20	4	4	X
662	laurel-leaf snailseed	<i>Cocculus laurifolius</i>	2	9.1	4.7	13.8	25	20	4	4	X
663	laurel-leaf snailseed	<i>Cocculus laurifolius</i>	1	7.5		7.5	25	20	4	4	
664	laurel-leaf snailseed	<i>Cocculus laurifolius</i>	2	8.3	6.7	15.0	25	20	4	4	X
665	laurel-leaf snailseed	<i>Cocculus laurifolius</i>	1	6.8		6.8	25	20	4	4	
666	laurel-leaf snailseed	<i>Cocculus laurifolius</i>	1	5.3		5.3	25	20	4	4	
667	laurel-leaf snailseed	<i>Cocculus laurifolius</i>	1	5.7		5.7	25	20	4	4	
668	laurel-leaf snailseed	<i>Cocculus laurifolius</i>	2	7.6	4.8	12.4	25	20	4	4	X
669	laurel-leaf snailseed	<i>Cocculus laurifolius</i>	2	8.3	5.6	13.9	25	20	4	4	X
670	laurel-leaf snailseed	<i>Cocculus laurifolius</i>	1	8.7		8.7	25	20	4	4	
671	laurel-leaf snailseed	<i>Cocculus laurifolius</i>	2	6.8	6.2	13.0	25	20	4	4	X
672	laurel-leaf snailseed	<i>Cocculus laurifolius</i>	1	7.8		7.8	25	20	4	4	
673	laurel-leaf snailseed	<i>Cocculus laurifolius</i>	2	7.1	5.4	12.5	25	20	4	4	X
674	laurel-leaf snailseed	<i>Cocculus laurifolius</i>	1	8.1		8.1	25	20	4	4	
675	laurel-leaf snailseed	<i>Cocculus laurifolius</i>	1	5.3		5.3	25	20	4	4	
676	western sycamore	<i>Platanus racemosa</i>	1	10.4		10.4	30	25	4	3	
677	western sycamore	<i>Platanus racemosa</i>	1	21.6		21.6	60	40	4	3	X
678	western sycamore	<i>Platanus racemosa</i>	1	9.3		9.3	40	30	4	4	
679	western sycamore	<i>Platanus racemosa</i>	1	14.1		14.1	35	35	4	4	X
680	Canary Island pine	<i>Pinus canariensis</i>	1	21.2		21.2	70	30	4	4	X
681	western sycamore	<i>Platanus racemosa</i>	1	15.2		15.2	40	30	4	4	X

dbh: diameter at breast height; ft: feet.
Aesthetics/Health Rating: 1=Very Poor, 2=Poor, 3=Fair, 4=Good, and 5=Excellent