

February 15, 2019

**NOTICE OF INTENT TO ADOPT – MITIGATED NEGATIVE DECLARATION**

Project Title: Plant Growth Environments Facility  
Project Location: UC Riverside Campus  
County: Riverside

Notice is hereby given that the University of California intends to adopt a Mitigated Negative Declaration for the proposed Plant Growth Environments Facility (PGEF) project located on the University of California, Riverside (UCR) campus, east of the City of Riverside and east of Interstate 215/State Route 60, in Riverside County, California.

In accordance with the State California Environmental Quality Act (CEQA) Guidelines and University of California (UC) Procedures for Implementation of CEQA, an Initial Study for the above named project has been prepared. The Initial Study is tiered from the UC Riverside (UCR) 2005 Long Range Development Plan (LRDP) Environmental Impact Report (EIR) as supplemented and updated by the UCR 2005 LRDP Amendment 2 EIR. Based upon the Tiered Initial Study, it has been determined that a Mitigated Negative Declaration is appropriate for this project.

UCR proposes to provide contemporary plant growth facilities that meet the requirements of a university research program within the East Campus Plant Growth Complex (East Complex) area. The proposed Plant Growth Environments Facility (PGEF) is the first facility to move forward into the planning, design, and construction stages as defined in the *Plant Growth Environments & Support Facilities Relocation Study*. The PGEF site is approximately 1.25 acres within the East Complex area and located at the eastern terminus of Eucalyptus Drive at East Campus Drive (see **Figure 1 – Regional and Location Vicinity Map**).

The proposed project would involve the demolition of the existing Lathhouse B, four plant growth glass houses, one Arabidopsis plant growth house, a temporary compost toilet, and a metal shed totaling approximately 13,106 square feet. Subsequent to demolition activities, the proposed project would include construction of a 2-story, approximately 38,000 gross square feet, approximately 33-foot high, cast-in-place concrete PGEF structure; and include on-site stationary equipment (packaged air handlers, evaporative cooling and fan coil units, and standby generator); 20-foot wide fire access lane along the south portion of the site; new east-west crosswalks at the intersection of East Campus Drive at Eucalyptus Drive; an Americans with Disabilities (ADA) compliant pedestrian pathway; one ADA parking space; and associated landscape, hardscape, utility, and infrastructure improvements. The proposed project would comply with the UC Policy on Sustainable Practices (Sustainable Practices Policy).

The proposed project would have the same operating hours as that of the existing Lathhouse B facility. A potential increase of 20 personnel have been assumed with implementation of the project which are expected to be filled by the local labor pool and students already on campus.

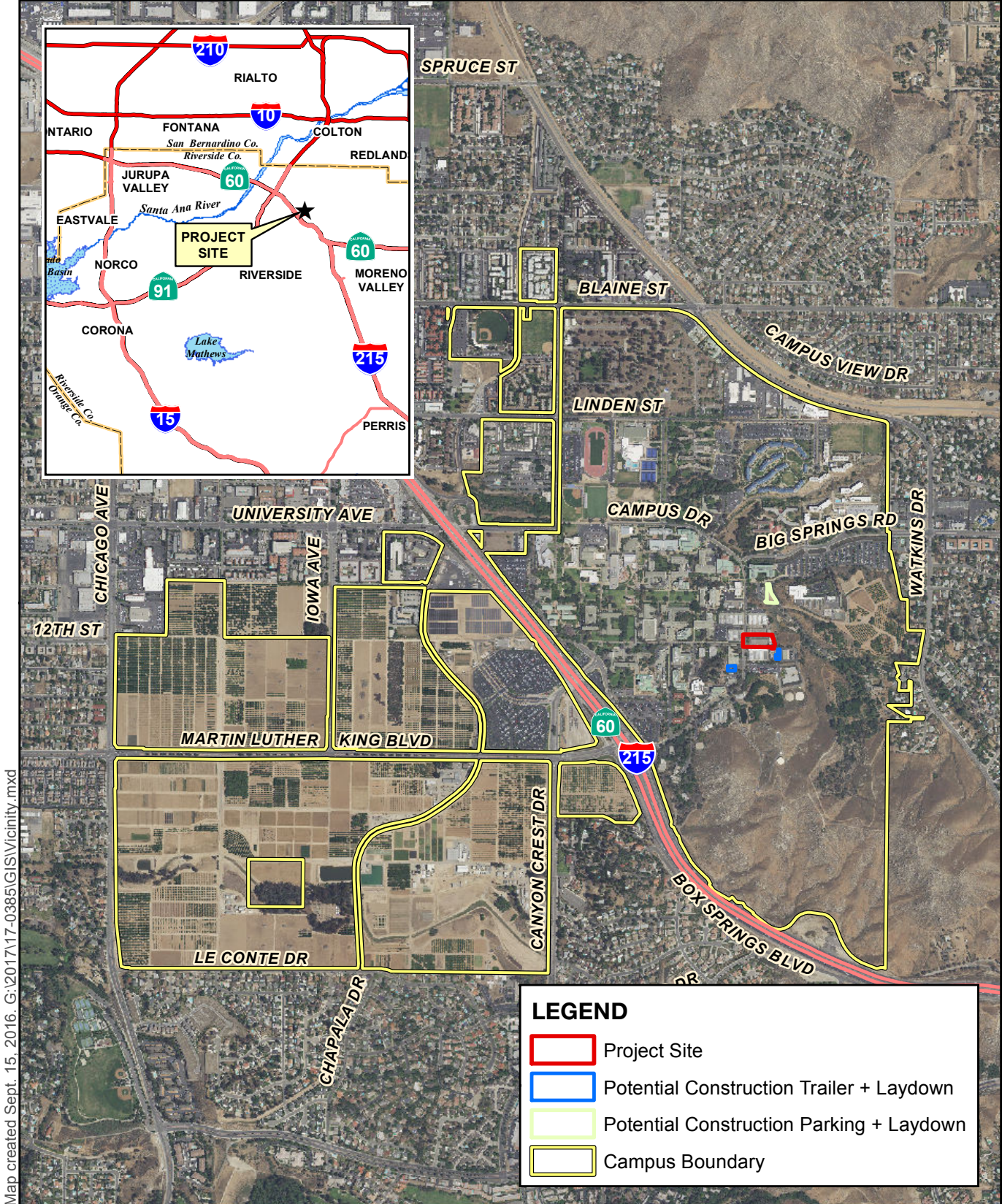
The project site is in an area designated as “Academic,” which allows for the development of the proposed project. The project site is not identified on any lists of hazardous waste sites compiled pursuant to California Government Code Section 65962.5.

It has been determined that with incorporation of applicable LRDP Planning Strategies (PSs), Programs and Practices (PPs), and Mitigation Measures (MMs), as well as project-specific MMs, the proposed project would not result in any new significant impacts that are not examined in the UCR 2005 LRDP EIR as supplemented and updated by the UCR 2005 LRDP Amendment 2 EIR, and the project Draft Initial Study, or in a significant increase in the previously identified impacts. This letter is intended to serve as the Notice of Completion for the project. The project's anticipated environmental effects are discussed in the Draft Initial Study. Copies of the Draft Initial Study and all documents referenced therein are available for review at the address below. In addition, the Initial Study is available for review on the web at:

<http://cpp.ucr.edu/environmental/ceqadocs.html>

Pursuant to CEQA, the 30-day public review period will extend from **February 15, 2019 through March 18, 2019**. Comments on the Draft Initial Study/Mitigated Negative Declaration must be received no later than **5:00 p.m. on March 18, 2019**. Submit your comments to [CEQA@ucr.edu](mailto:CEQA@ucr.edu) or send written comments to:

Jaime Engbrecht, Senior Planner  
Campus Planning - Planning, Design, and Construction  
University of California, Riverside  
1223 University Avenue, Suite 240  
Riverside, CA 92507



Map created Sept. 15, 2016. G:\2017\17-0385\GIS\Vicinity.mxd

Sources: UC Riverside, 2018; Riverside Co, GIS, 2018; USDA NAIP, 2016

**Figure 1 – Regional and Location Vicinity Map**  
UCR Plant Growth Environments Facility

